



Annual Report 2015

of the Certified Breast Cancer Centres (BCCs)

Audit year 2014 / indicator year 2013

Content

Introduction	3
Status of the certification system: Breast Cancer Centres 2015	3
General information	4
Tumour documentation systems used in Breast Cancer Centres	7
Basic data	8
Analysis of Indicators	10
Indicator Nr. 1: Postoperative case presentation	10
Indicator Nr. 2: Pretreatment case presentation	11
Indicator Nr. 3: Case discussion of local recurrence/metastases	12
Indicator Nr. 4.1: Recommended RT after BCT in cases of inv. BrCa	13
Indicator Nr. 4.2: Completed RT after BCT in cases of inv. Br-Ca (based on year previous to index year)	14
Indicator Nr. 5.1: Recommended RT after BCT in cases of DCIS	15
Indicator Nr. 5.2: Completed radiotherapy after BCT in cases of DCIS (based on year previous to index year)	16
Indicator Nr. 6.1: Recommended RT after a mastectomy in cases of inv. Br-Ca	17
Indicator Nr. 6.2: Completed radiotherapy after a mastectomy in cases of inv. breast cancer (in relation to the previous index year)	18
Indicator Nr. 7.1: Recommended chemotherapy in cases of steroid receptor negative diagnostic finding	19
Indicator Nr. 7.2: Completed chemotherapies in cases of steroid receptive negative diagnostic finding (based on year previous to ind. year)	20
Indicator Nr. 8.1: Recommended chemotherapy in cases of receptor positive and nodal positive diagnostic finding	21
Indicator Nr. 8.2: Completed chemotherapy in cases of receptor positive and nodal positive diagnostic finding (based on year previous to ind. year)	22
Indicator Nr. 9.1: Recommended endocrine therapy in cases of steroid receptor positive diagnostic finding	23
Indicator Nr. 9.2: Initiated endocrine therapy in cases of steroid receptive positive diagnostic finding ⁴ (in relation to the previous index year)	24
Indicator Nr. 10.1: Recommended trastuzumab therapy over one year in cases of HER-2 positive diagnostic finding	25
Indicator Nr. 10.2: Completed trastuzumab therapy over 1 year in cases of HER2 positive diagnostic finding	26
Indicator Nr. 11: Endocrine therapy in cases of metastases	27
Indicator Nr. 12: Psycho-oncologic care (>30 min)	28
Indicator Nr. 13: Social-service counseling	29
Indicator Nr. 14: Participation in research study	30
Indicator Nr. 15: Pre-therapeutic histological confirmation	31
Indicator Nr. 16: Primary cases Br-Ca	32
Indicator Nr. 17: BCT in cases of pT1 primary cases	33
Indicator Nr. 18: Mastectomies primary cases	34
Indicator Nr. 19: DCIS in initial procedure primary cases (pTIS)	35
Indicator Nr. 20: LN dissection in cases of DCIS	36
Indicator Nr. 21: Determination of the nodal status in cases of inv. Br-Ca	37
Indicator Nr. 22: SLNE only in cases of pN0	38
Indicator Nr. 23: Intraoperative specimen radio-/sonography	39
Indicator Nr. 24: Revision operations primary cases	40
Indicator Nr. 25: Postoperative wound infection primary cases	41
Indicator Nr. 26: Breast reconstruction	42
Indicator Nr. 27: Specification of the resection margin and safety margin	43
Indicator Nr. 28: Report to the cancer registry	44
Imprint	45

Status of the certification system: Breast Cancer Centres 2014

	31.12.2014	31.12.2013	31.12.2012	31.12.2011	31.12.2010
Ongoing procedures	4	2	6	4	8
Certified centres	224	218	212	204	200
Certified clinical sites	277	274	267	261	258
BCCs with 1 clinical site	177	169	163	153	149
2 clinical sites	43	44	45	47	46
3 clinical sites	2	3	2	2	3
4 clinical sites	2	2	2	2	2
Total primary cases	52,568	51,826	50,329	49,332	52,345
Primary cases per centre mean	235	238	237	242	262
Primary cases per centre median	170	159	166	166.5	176.5

General information

	Definition of Indicator	All Clinical Sites 2013	
		Median	Range
Numerator	Primary cases with DCIS and BCT for which radiotherapy was recommended	13	0 - 65
Population	Primary cases with DCIS und BCT	13	1 - 68
Rate	Target ≥ 95%	100%	0,00% - 100% (0/1) - (37/37)

Basic data / indicator:

The definition of the **numerator**, **population** (=denominator), and **target value** is taken from the data sheet form, a part of the Catalogue of Requirements. **Ranges** are indicated for numerator, population, and rate.

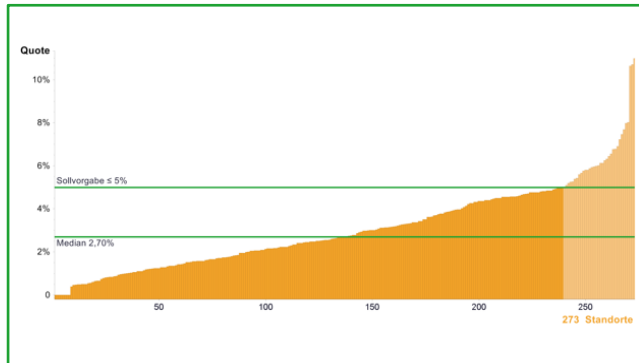
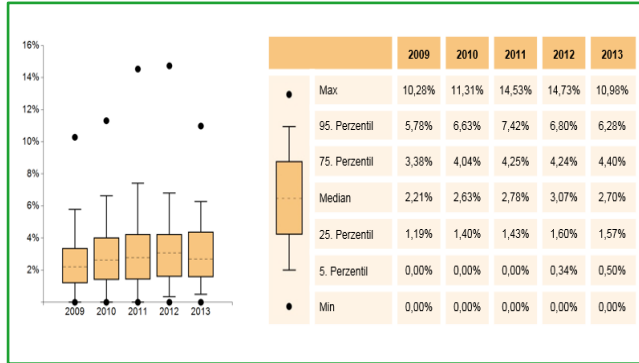


Chart:

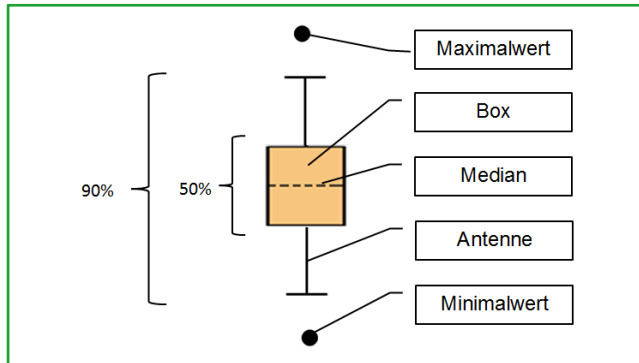
The x-axis indicates the number of centres, the y-axis indicates the value in percent. Median and target value are indicated by green lines.

General information



Cohorts development:

The development of the cohorts 2009, 2010, 2011, 2012, and 2013 is graphically represented with boxplots.



Boxplot:

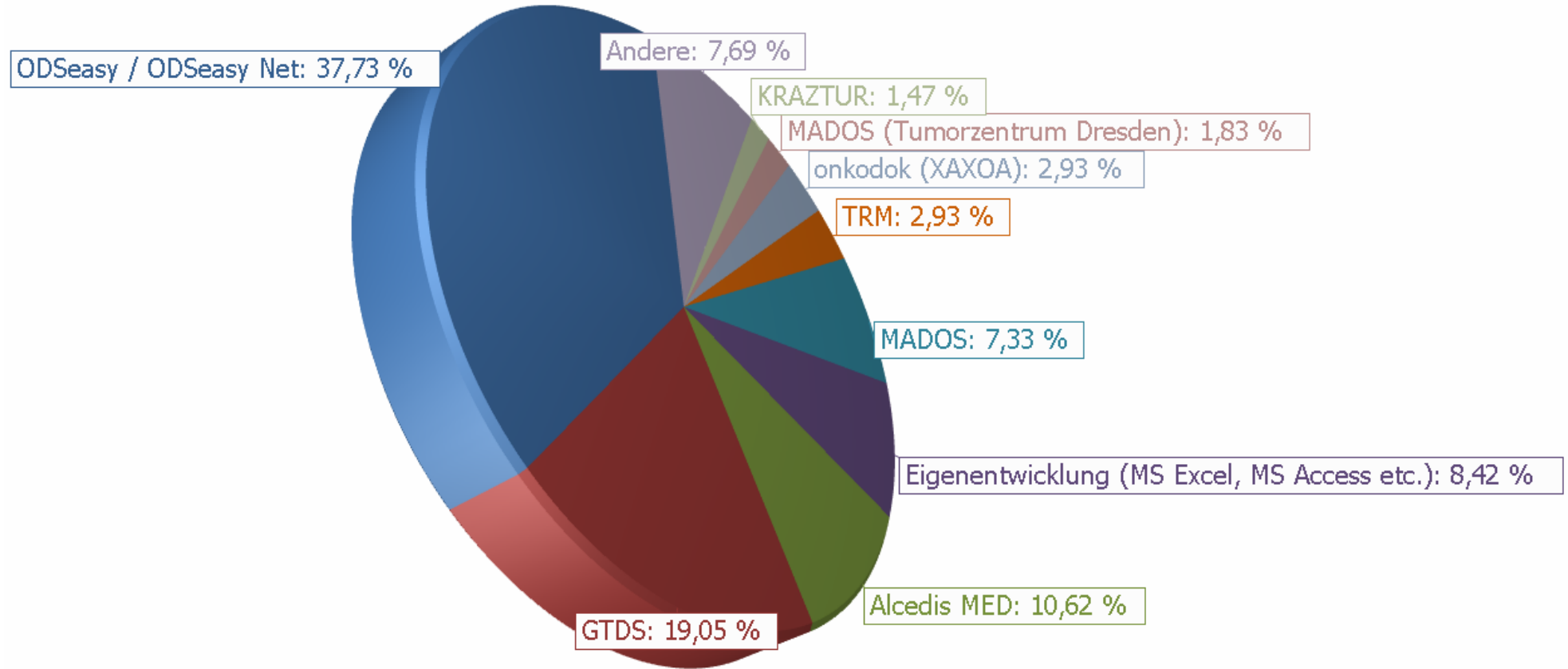
A boxplot consists of a **box with median**, **whiskers** and **outliers**. 50% of the centres constitute the box, 90% box and whiskers, dots present the outliers.

General information

	31/12/2014	31/12/2013	31/12/2012	31/12/2011	31/12/2010
Clinical sites in annual report	273	268	256	252	246
Percentage	98.6%	97.8%	95.9%	96.6%	95.4%

Indicators presented in this report reflect the indicator year 2013 – these indicators are the basis for all audits of the year 2014. www.oncomap.de provides a daily updated overview of all certified centres.

Tumour documentation systems used in Breast Cancer Centres

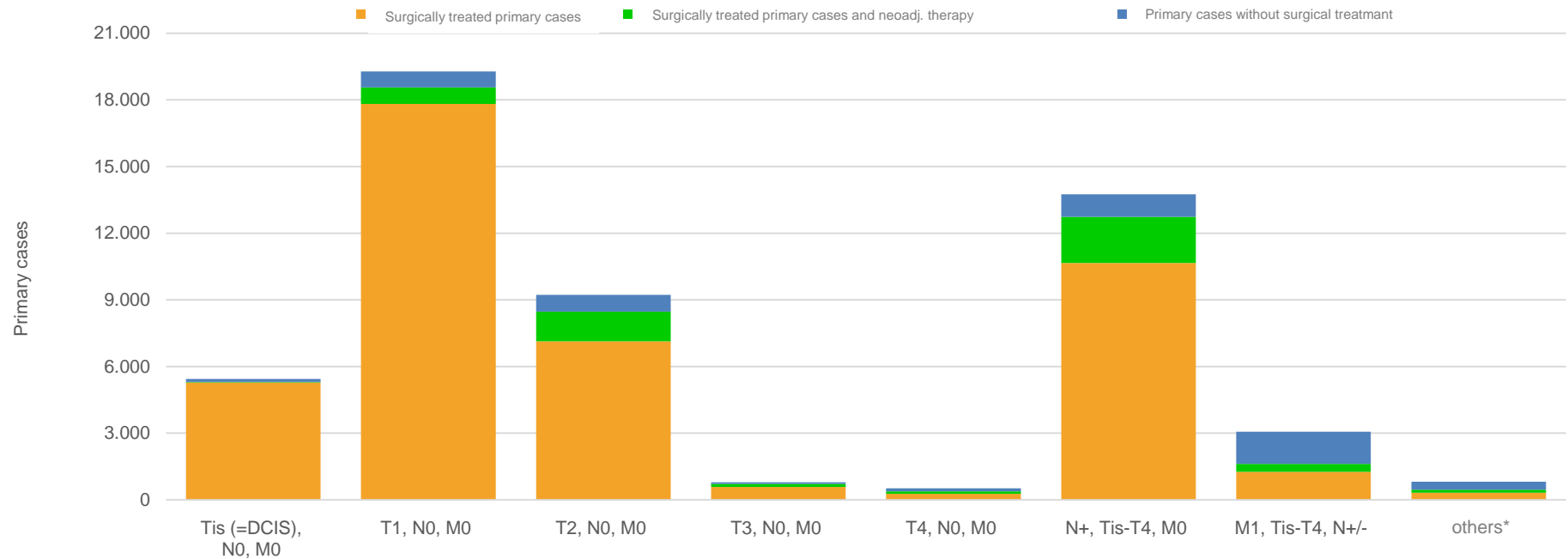


Legende:

Andere/ "others"

System is used in less than 4 centres

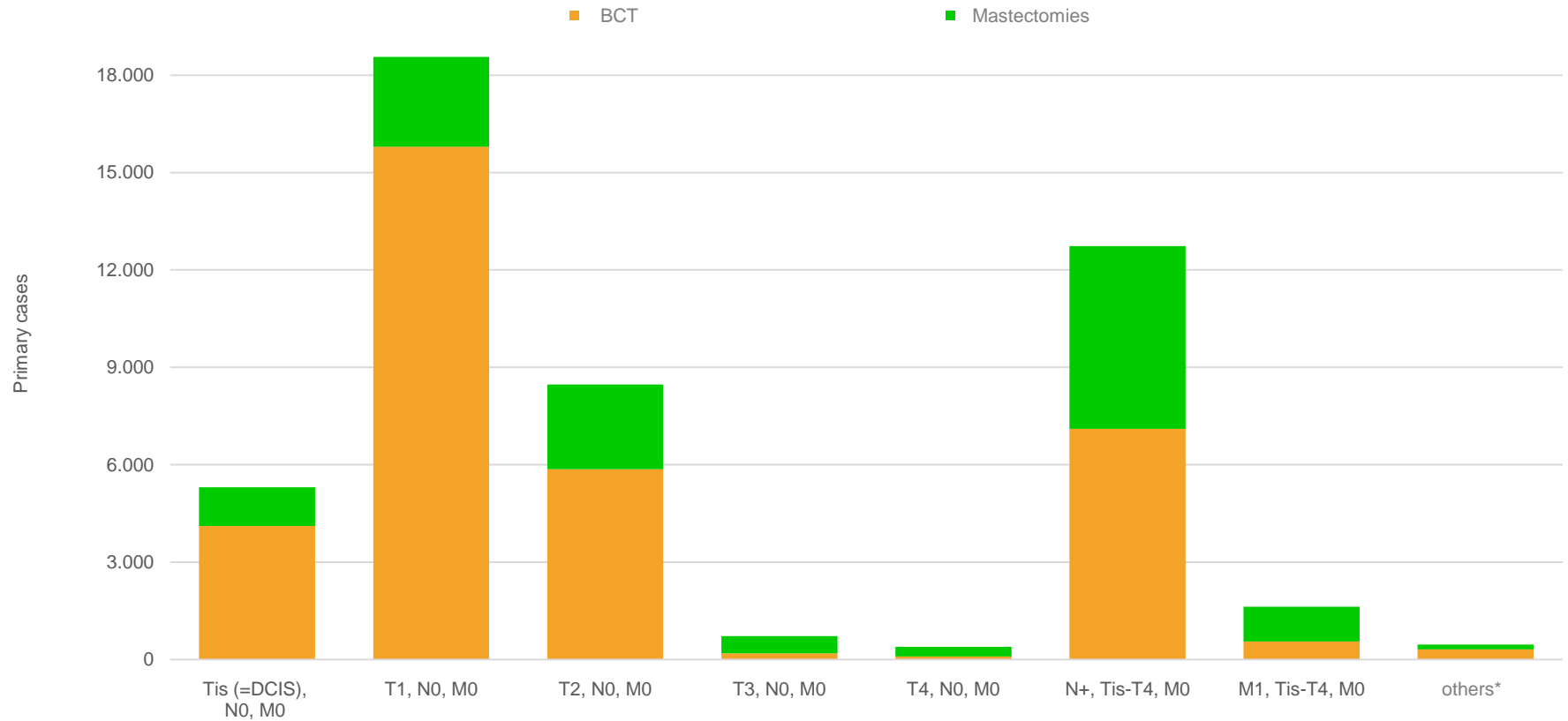
Basic data – Primary cases BC



	Tis (=DCIS), NO, MO	T1, NO, MO	T2, NO, MO	T3, NO, MO	T4, NO, MO	N+, Tis-T4, MO	M1, Tis-T4, N+/-	others*
Primary cases without surgical treatment	138 (2,53%)	723 (3,75%)	755 (8,18%)	75 (9,43%)	134 (25,72%)	1,023 (7,44%)	1,443 (47,10%)	350 (43,05%)
Surgically treated primary cases and neoadj. therapy	21 (0,39%)	740 (3,84%)	1,340 (14,52%)	132 (16,60%)	119 (22,84%)	2,069 (15,04%)	358 (11,68%)	139 (17,10%)
Surgically treated primary cases	5,285 (97,08%)	17,821 (92,41%)	7,132 (77,30%)	588 (73,96%)	268 (51,44%)	10,664 (77,52%)	1,263 (41,22%)	324 (39,85%)
Primary Cases overall	5,444	19,284	9,227	795	521	13.756	3.064	813

*others: e.g. T1, N0, Mx

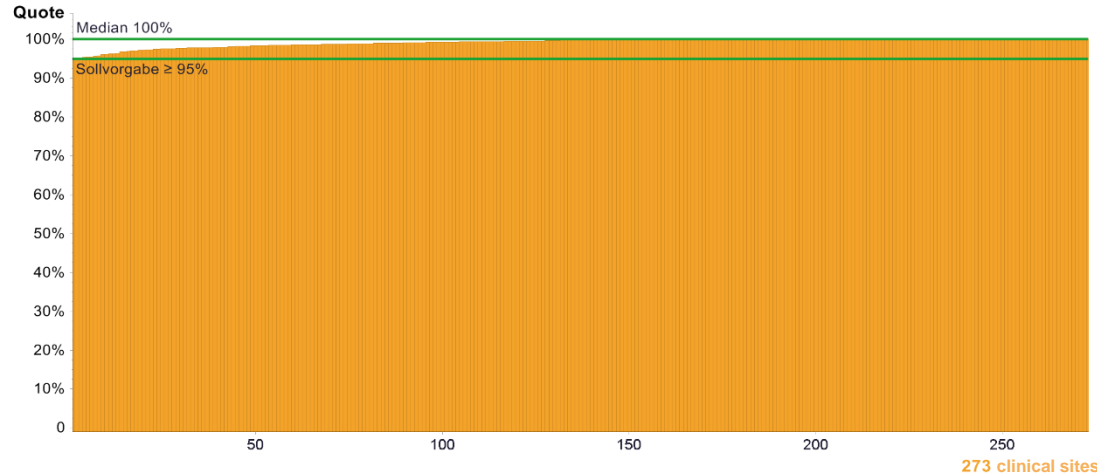
Basic data – Distribution of surgically treated primary cases



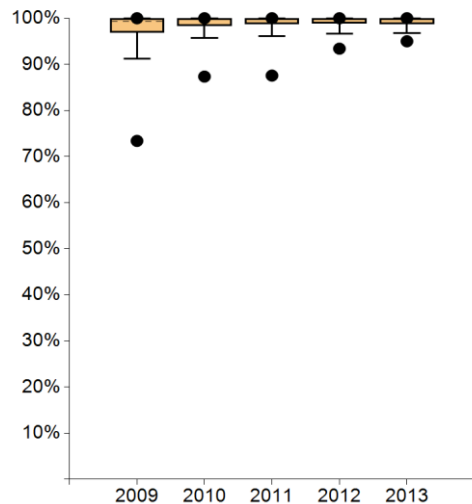
	Tis (=DCIS), NO, MO	T1, NO, MO	T2, NO, MO	T3, NO, MO	T4, NO, MO	N+, Tis-T4, MO	M1, Tis-T4, N+/-	others*
Mastectomy	1,197 (22,56%)	2,765 (14,90%)	2,607 (30,77%)	530 (73,61%)	294 (75,97%)	5,624 (44,17%)	1,063 (65,58%)	151 (32,61%)
BCT	4,109 (77,44%)	15,796 (85,10%)	5,865 (69,23%)	190 (26,39%)	93 (24,03%)	7,109 (55,83%)	558 (34,42%)	312 (67,39%)
Primary Cases	5,306	18,561	8,472	720	387	12,733	1,621	463

*others e.g. T1, N0, Mx

1. Postoperative case presentation



	Definition of indicator	All clinical sites 2013	
		Median	Range
Numerator	All surgically treated primary cases presented in the tumour conference	154*	38 - 786
Population	Surgically treated primary cases (for definition of a primary case see 5.2.1)	156*	39 - 793
Rate	Target ≥ 95%	100%	95.00% - 100% (133/140) - (552/552)

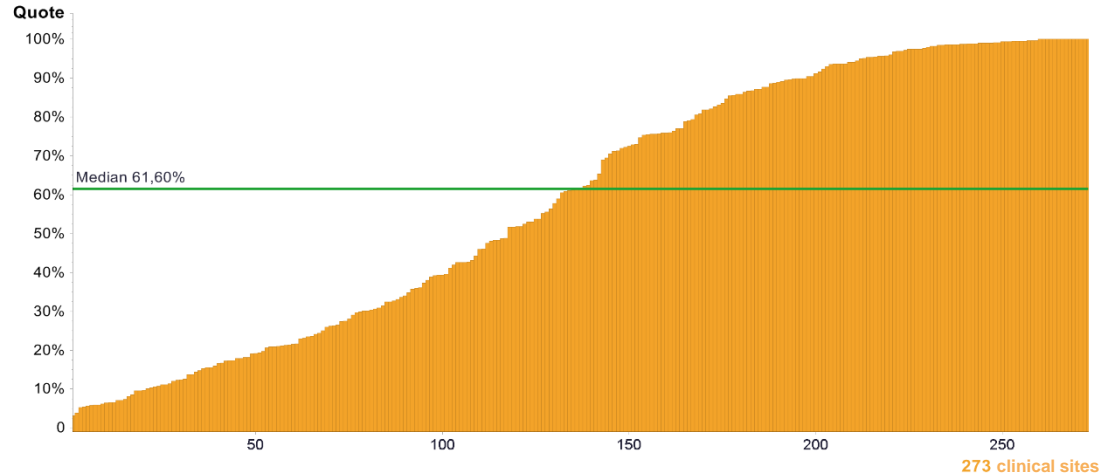


	2009	2010	2011	2012	2013
● Max	100%	100%	100%	100%	100%
95th percentile	100%	100%	100%	100%	100%
75th percentile	100%	100%	100%	100%	100%
Median	99.32%	100%	100%	100%	100%
25th percentile	96.88%	98.31%	98.72%	98.93%	98.69%
5th percentile	91.19%	95.66%	96.10%	96.67%	96.77%
● Min	73.39%	87.34%	87.56%	93.40%	95.00%

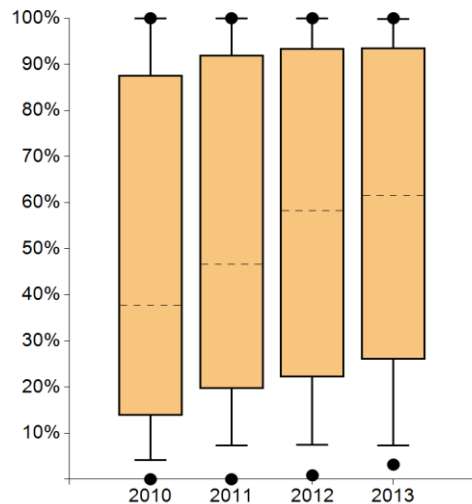
Clinical sites with evaluable data		Clinical sites meeting the target	
Number	%	Number	%
273	100%	273	100%

Comment:

2. Pretreatment case presentation



	Definition of indicator	All clinical sites 2013	
		Median	Range
Numerator	Number of primary cases presented in the pre-therapeutic tumour board	89	3 - 682
Population	Primary cases	172	44 - 839
Rate	Currently no target value	61.60%	3.18% - 100% (5/157) - (644/644)



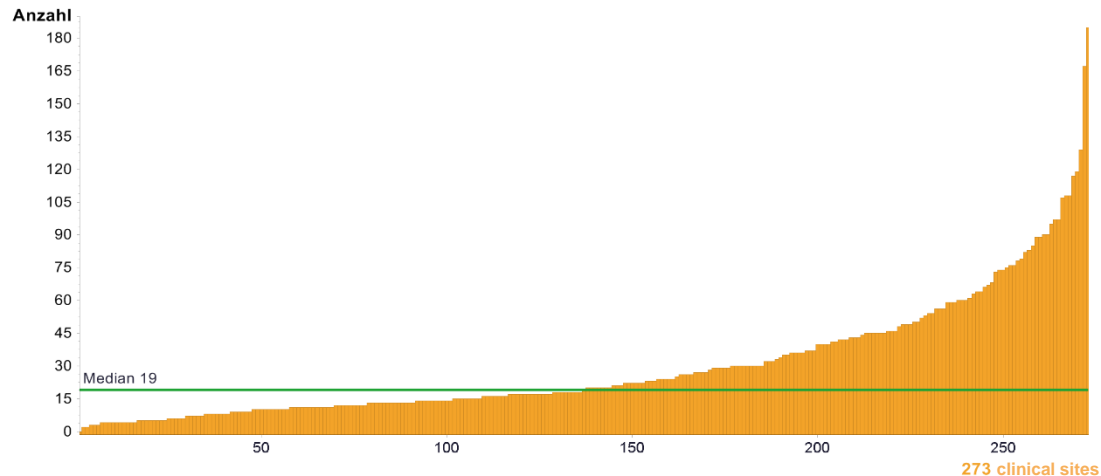
	2009	2010	2011	2012	2013
● Max	-----	100%	100%	100%	100%
95th percentile	-----	100%	100%	100%	99.77%
75th percentile	-----	87.67%	91.98%	93.41%	93.63%
Median	-----	37.70%	46.67%	58.26%	61.60%
25th percentile	-----	13.81%	19.63%	22.19%	25.97%
5th percentile	-----	4.17%	7.39%	7.39%	7.26%
● Min	-----	0.00%	0.00%	0.85%	3.18%

Clinical sites with evaluable data		Clinical sites meeting the target	
Number	%	Number	%
273	100%	-----	-----

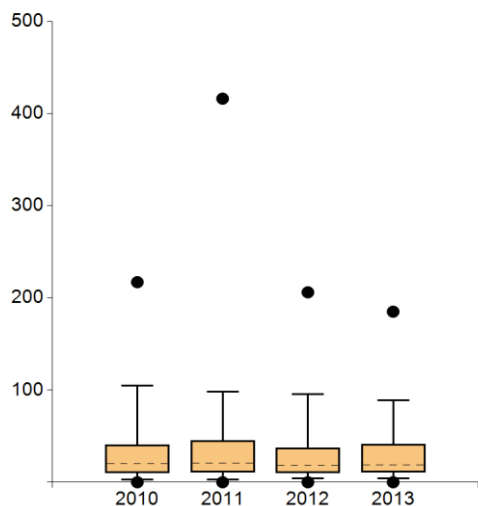
Comment:

Proportion of pretherapeutic case discussions increasing over time. Centres with low presentation rates mainly present patients with neoadjuvant therapy. However, more and more centres are discussing all primary case patients pre- and post-operatively.

3. Case discussion of local recurrence/metastases



	Definition of indicator	All clinical sites 2013	
		Median	Range
Number	Number of cases with local recurrence/newly diagnosed metastases presented in the TB	19	0 - 185
	Currently no target value		



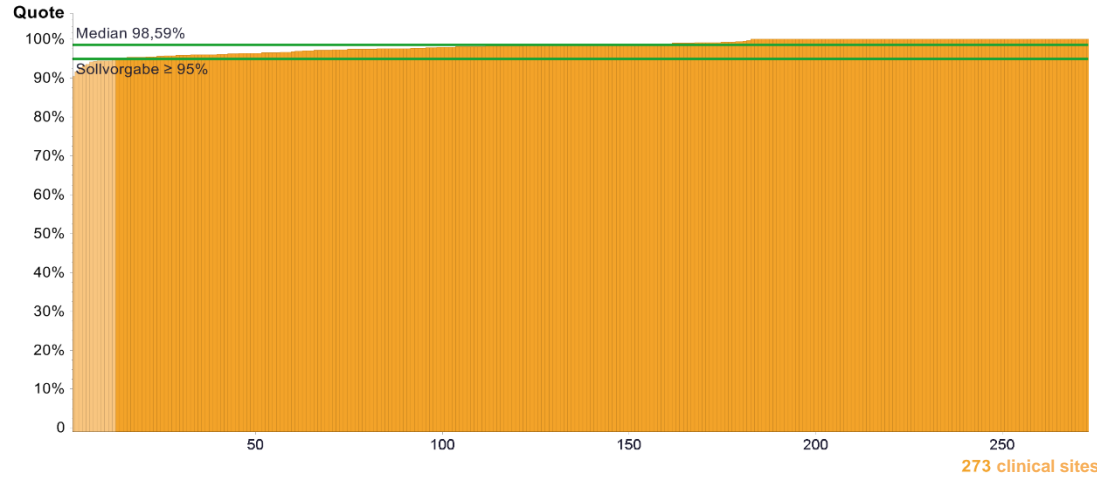
	2009	2010	2011	2012	2013
Max	----	217.00	416.00	206.00	185.00
95th percentile	----	104.80	98.35	95.50	89.00
75th percentile	----	40.50	45.00	37.00	41.00
Median	----	20.00	20.50	18.00	19.00
25th percentile	----	10.00	11.00	10.00	11.00
5th percentile	----	3.00	3.00	4.00	4.00
Min	----	0.00	0.00	0.00	0.00

Clinical sites with evaluable data		Clinical sites meeting the target	
Number	%	Number	%
273	100%	----	----

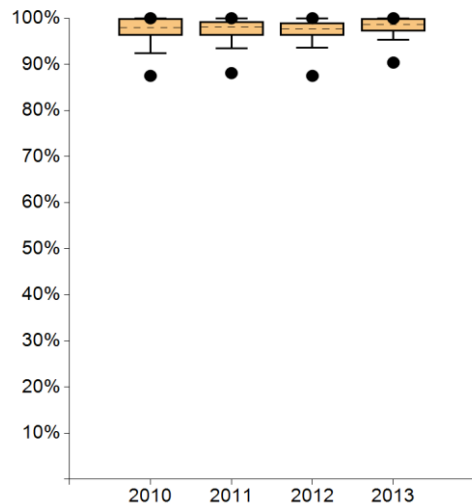
Comment:

Indicator from 2015 no longer given just as a number but also as a proportion (ratio of presented patients with local recurrence/newly diagnosed metastases to population = numerator).

4.1. Recommended RT after breast conserving therapy in cases of inv. BC



	Definition of indicator	All clinical sites 2013	
		Median	Range
Numerator	Primary cases with inv. breast cancer and breast conserving therapy, in which a radiotherapy was recommended	94	20 - 515
Population	Primary cases with invasive breast cancer with BCT	96	20 - 525
Rate	Target ≥ 95%	98.59%	90.38% - 100% (94/104) - (285/285)



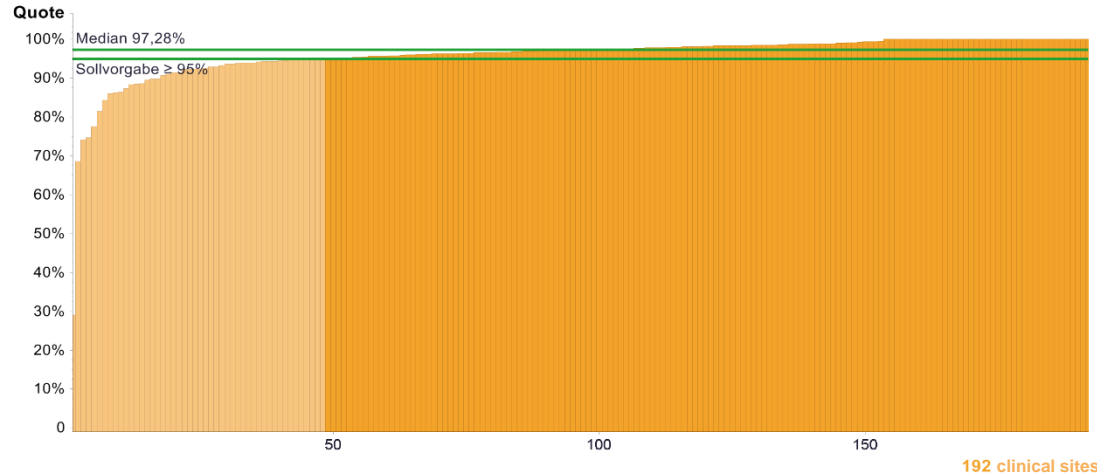
	2009	2010	2011	2012	2013
● Max	-----	100%	100%	100%	100%
95th percentile	-----	100%	100%	100%	100%
75th percentile	-----	100%	99.22%	99.08%	100%
Median	-----	98.00%	98.15%	97.75%	98.59%
25th percentile	-----	96.25%	96.28%	96.20%	97.18%
5th percentile	-----	92.37%	93.51%	93.58%	95.25%
● Min	-----	87.50%	88.10%	87.50%	90.38%

Clinical sites with evaluable data		Clinical sites meeting the target	
Number	%	Number	%
273	100%	261	95,60%

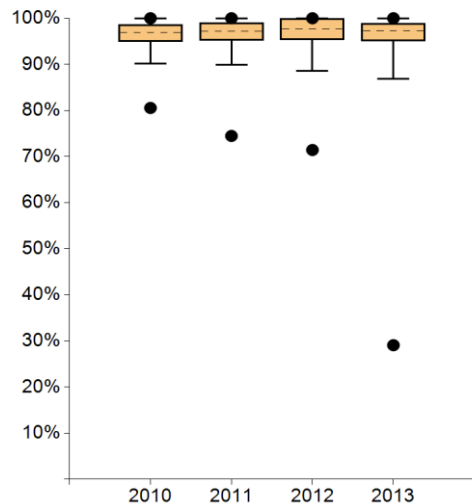
Comment:

The reasons given by centres which do not meet the target are advanced age, existing multi-morbidities with/or distant metastasization of patient.

4.2. Completed RT after breast conserving therapy in cases of inv. BC (based on year previous to index year)



	Definition of indicator	All clinical sites 2013	
		Median	Range
Numerator	Primary cases with inv. breast cancer and BCT, for which radiotherapy was recommended and performed	89,5	18 - 322
Population	Numerator for indicator no. 4.1 for the year previous to index year	93	19 - 332
Rate	Target ≥ 95%	97.28%	29.08% - 100% (41/141) - (194/194)



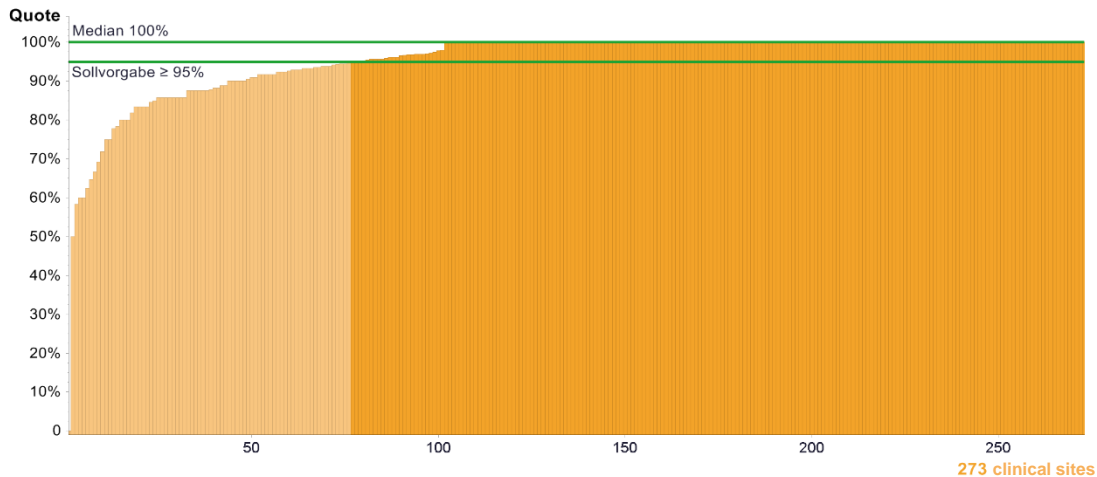
	2009	2010	2011	2012	2013
● Max	-----	100%	100%	100%	100%
95th percentile	-----	100%	100%	100%	100%
75th percentile	-----	98.65%	98.98%	100%	98.93%
Median	-----	96.89%	97.10%	97.70%	97.28%
25th percentile	-----	94.98%	95.24%	95.27%	94.99%
5th percentile	-----	90.21%	89.86%	88.54%	86.90%
● Min	-----	80.54%	74.47%	71.42%	29.08%

Clinical sites with evaluable data		Clinical sites meeting the target	
Number	%	Number	%
192	70.33%	144	75.0%

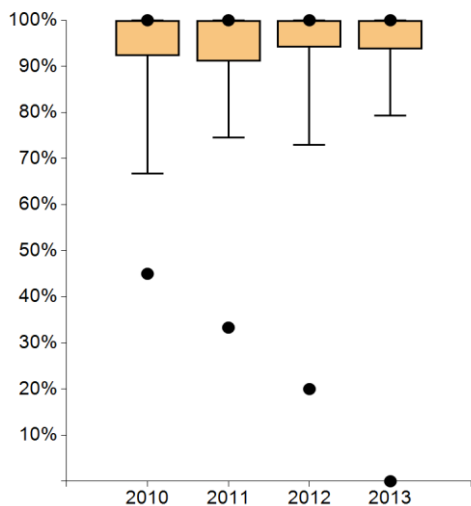
Comment:

The centre with the lowest value had a documentation problem. The reason given by the centres for the non-conduct of radiation therapy is patient refusal. Information is optional. Indicator is a quality indicator of the Guideline

5.1. Recommended RT after breast conserving therapy in cases of DCIS



	Definition of indicator	All clinical sites 2013	
		Median	Range
Numerator	Primary cases with DCIS and BCT for which radiotherapy was recommended	13	0 - 65
Population	Primary cases with DCIS und BCT	13	1 - 68
Rate	Target ≥ 95%	100%	0.00% - 100% (0/1) - (37/37)



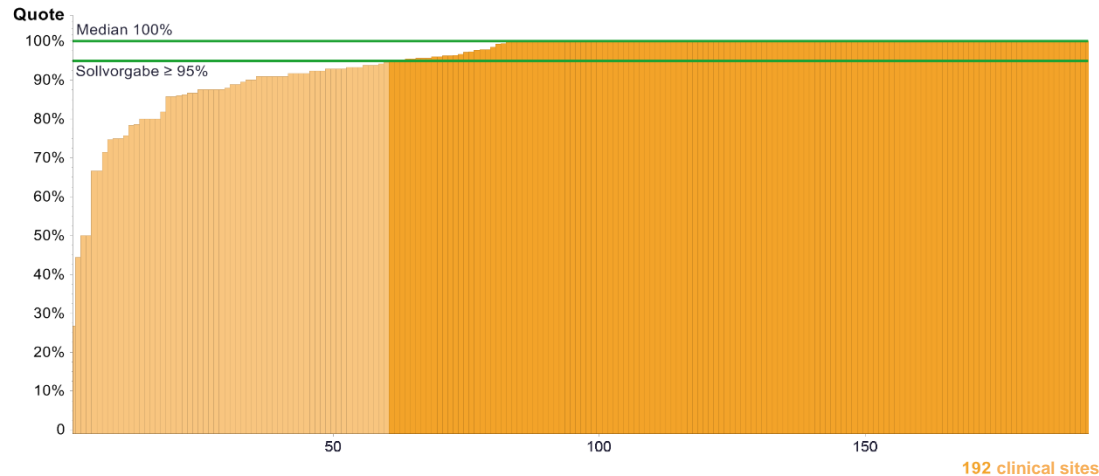
	2009	2010	2011	2012	2013
Max	-----	100%	100%	100%	100%
95th percentile	-----	100%	100%	100%	100%
75th percentile	-----	100%	100%	100%	100%
Median	-----	100%	100%	100%	100%
25th percentile	-----	92.31%	91.11%	94.11%	93.75%
5th percentile	-----	66.67%	74.50%	72.96%	79.30%
Min	-----	45.00%	33.33%	20.00%	0.00%

Clinical sites with evaluable data		Clinical sites meeting the target	
Number	%	Number	%
273	100%	197	72.16%

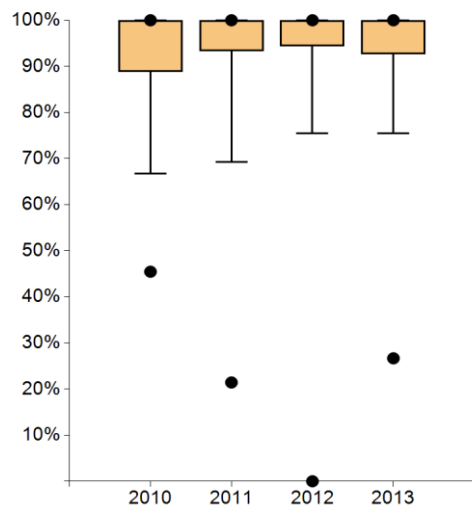
Comment:

The centre with the lowest recommendation proportion had 1 patient with DCIS and BCT, who was not recommended radiation because of her age. Reasons for the non-conduct of radiation in the case of DCIS: small tumour, low grading and low-risk tumour.

5.2. Completed radiotherapy after breast conserving therapy in cases of DCIS (based on year previous to index year)



	Definition of indicator	All clinical sites 2013	
		Median	Range
Numerator	Primary cases with DCIS and BCT that were treated with radiotherapy	11	1 - 220
Population	Numerator for indicator no. 5.1 for the year previous to index year	11,5	1 - 241
Rate	Target ≥ 95%	100%	26.67% - 100% (4/15) - (95/95)



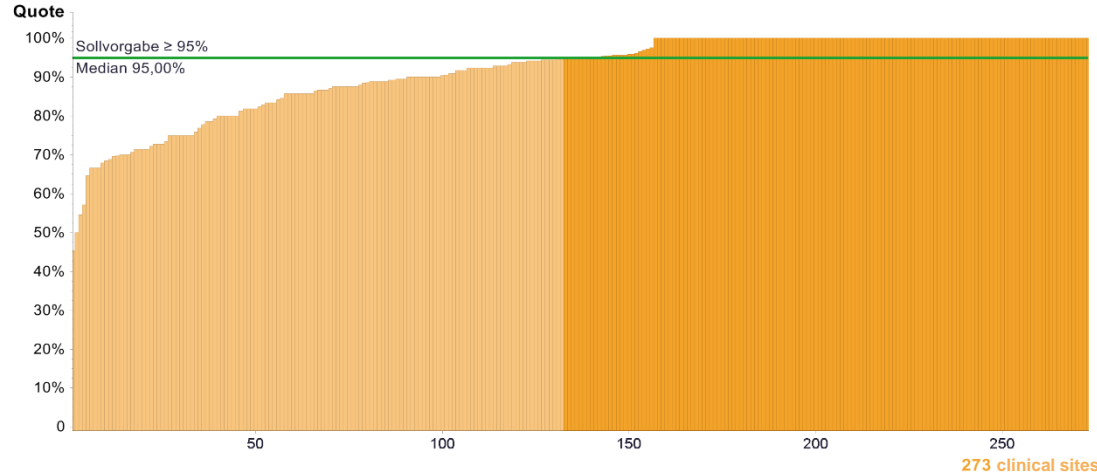
	2009	2010	2011	2012	2013
● Max	-----	100%	100%	100%	100%
95th percentile	-----	100%	100%	100%	100%
75th percentile	-----	100%	100%	100%	100%
Median	-----	100%	100%	100%	100%
25th percentile	-----	88.89%	93.33%	94.44%	92.72%
5th percentile	-----	66.67%	69.27%	75.42%	75.42%
● Min	-----	45.45%	21.43%	0.00%	26.67%

Clinical sites with evaluable data		Clinical sites meeting the target	
Number	%	Number	%
192	70.33%	132	68.75%

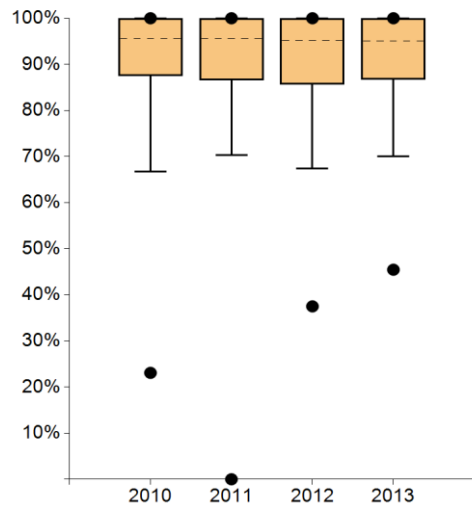
Comment

Most of the recommended therapies were conducted. Non-conduct results above all from patient refusal. The centre with the lowest rate is the same centre that had the lowest value for indicator 4.2 as well. Documentation problems were given as the reason. Information is optional.

6.1. Recommended RT after a mastectomy in cases of inv. Br-Ca



	Definition of indicator	All clinical sites 2013	
		Median	Range
Numerator	Primary cases with invasive breast cancer and mastectomy, for which radiotherapy was recommended	13	1 - 60
Population	Primary cases with invasive breast cancer und mastectomy and indication for radiotherapy of the chest wall (T3/4-Tm, R1/R2 resection with no possibility of repeated resection or pN +> 3 LN)	14	1 - 63
Rate	Target \geq 95%	95.00%	45.45% - 100% (5/11) - (52/52)



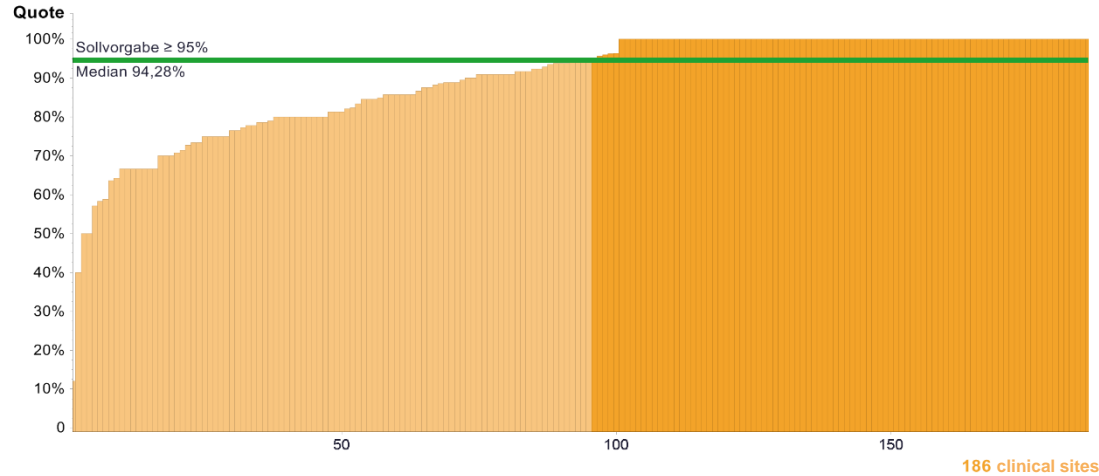
	2009	2010	2011	2012	2013
Max	-----	100%	100%	100%	100%
95th percentile	-----	100%	100%	100%	100%
75th percentile	-----	100%	100%	100%	100%
Median	-----	95.60%	95.55%	95.23%	95.00%
25th percentile	-----	87.50%	86.59%	85.71%	86.67%
5th percentile	-----	66.67%	70.24%	67.39%	70.00%
Min	-----	23.08%	0.00%	37.50%	45.45%

Clinical sites with evaluable data		Clinical sites meeting the target	
Number	%	Number	%
273	100%	141	51.65%

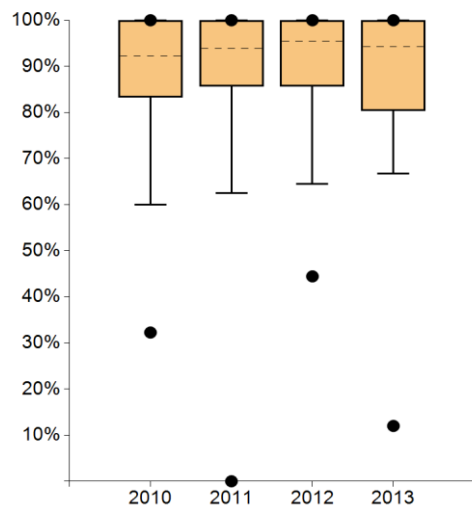
Comment

The reasons for not recommending therapy are advanced age of patients, existing distant metastasization and multi-morbidities.

6.2. Completed radiotherapy after a mastectomy in cases of inv. breast cancer (in relation to the previous index year)



	Definition of indicator	All clinical sites 2013	
		Median	Range
Numerator	Primary cases with invasive breast cancer and mastectomy, for which there was an indication for radiotherapy of the chest wall (= T3/4-Tm, R1/R2-resection without an option of repeated resection or pN +> 3 LN) and on whom radiotherapy was performed	10	1 - 39
Population	Numerator for indicator no. 6.1 from the year previous to index year	12	1 - 44
Rate	Target ≥ 95%	94.28%	12.00% - 100% (3/25) - (30/30)



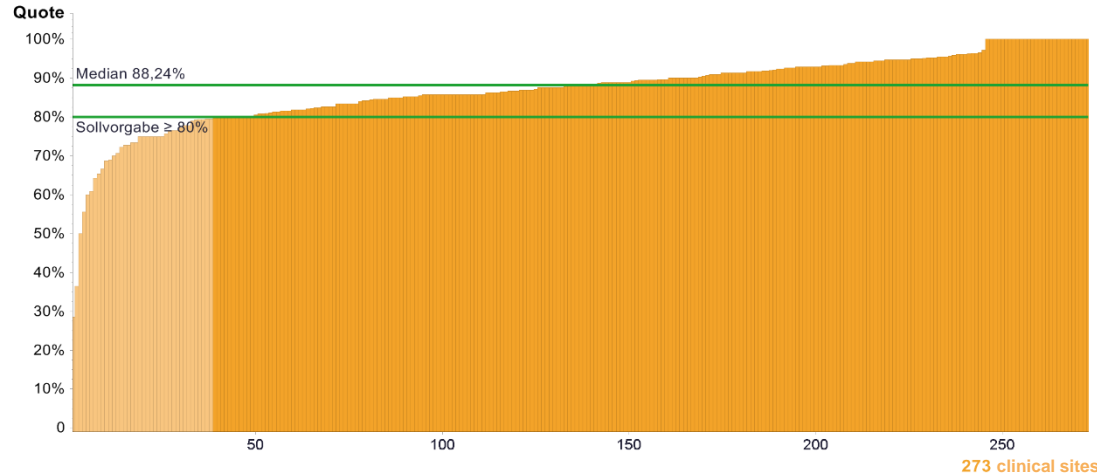
	2009	2010	2011	2012	2013
Max	-----	100%	100%	100%	100%
95th percentile	-----	100%	100%	100%	100%
75th percentile	-----	100%	100%	100%	100%
Median	-----	92.31%	93.85%	95.45%	94.28%
25th percentile	-----	83.33%	85.71%	85.71%	80.31%
5th percentile	-----	60.00%	62.50%	64.52%	66.67%
Min	-----	32.26%	0.00%	44.44%	12.00%

Clinical sites with evaluable data		Clinical sites meeting the target	
Number	%	Number	%
186	68.13%	91	48.92%

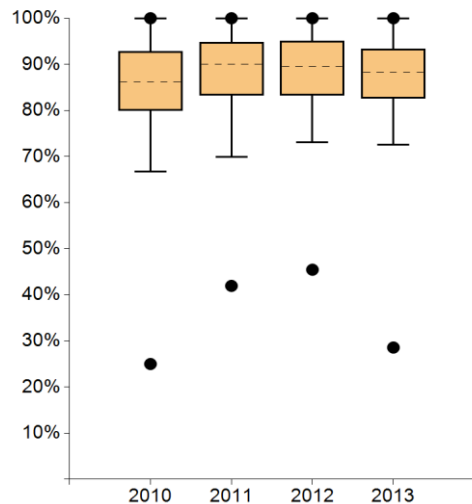
Comment

The reason given for non-conduct of the therapy is patient refusal. The centre with the lowest rate is the same centre that had the lowest value for indicators 4.2/5.2 as well. Information is optional. Indicator is quality indicator of the Guideline.

7.1. Recommended chemotherapy in cases of steroid receptor negative diagnostic finding



	Definition of indicator	All clinical sites 2013	
		Median	Range
Numerator	All steroid receptor neg. primary cases with invasive breast cancer, for which chemotherapy was recommended	18	1 - 84
Population	Primary cases with invasive breast cancer with steroid receptor negative diagnostic finding	21	1 - 96
Rate	Target ≥ 80%	88.24%	28.57% - 100% (2/7) - (36/36)



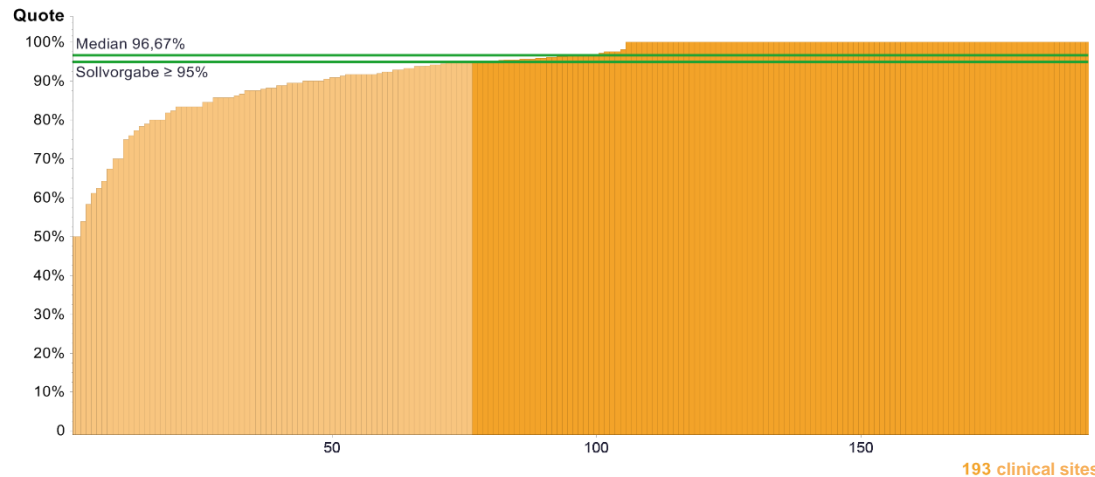
	2009	2010	2011	2012	2013
Max	-----	100%	100%	100%	100%
95th percentile	-----	100%	100%	100%	100%
75th percentile	-----	92.77%	94.74%	95.00%	93.33%
Median	-----	86.24%	90.00%	89.53%	88.24%
25th percentile	-----	80.00%	83.33%	83.33%	82.61%
5th percentile	-----	66.67%	69.89%	73.14%	72.53%
Min	-----	25.00%	41.94%	45.45%	28.57%

Clinical sites with evaluable data		Clinical sites meeting the target	
Number	%	Number	%
273	100%	235	86.08%

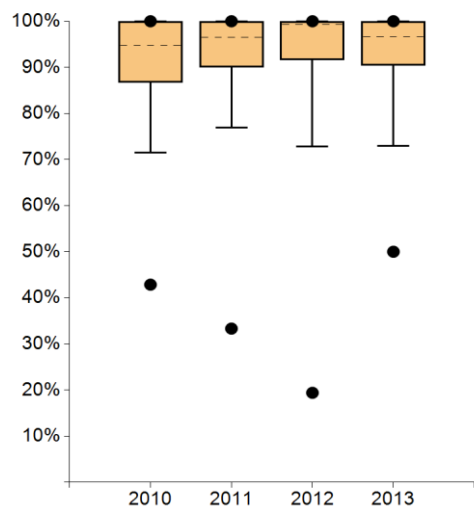
Comment

Some centres did not include patients with neoadjuvant therapy in the numerator. The reasons given for non-recommendation: multi-morbidity, pT1a, patients' age. The centre with the lowest value has a small population (7 patients).

7.2. Completed chemotherapies in cases of steroid receptive negative diagnostic finding (based on year previous to index year)



	Definition of indicator	All clinical sites 2013	
		Median	Range
Numerator	All steroid receptor negative primary cases with invasive breast cancer, to whom chemotherapy was administered	16	1 - 68
Population	Numerator for indicator Nr. 7.1 from the year previous to index year	18	1 - 76
Rate	Target ≥ 95%	96.67%	50.00% - 100% (1/2) - (43/43)



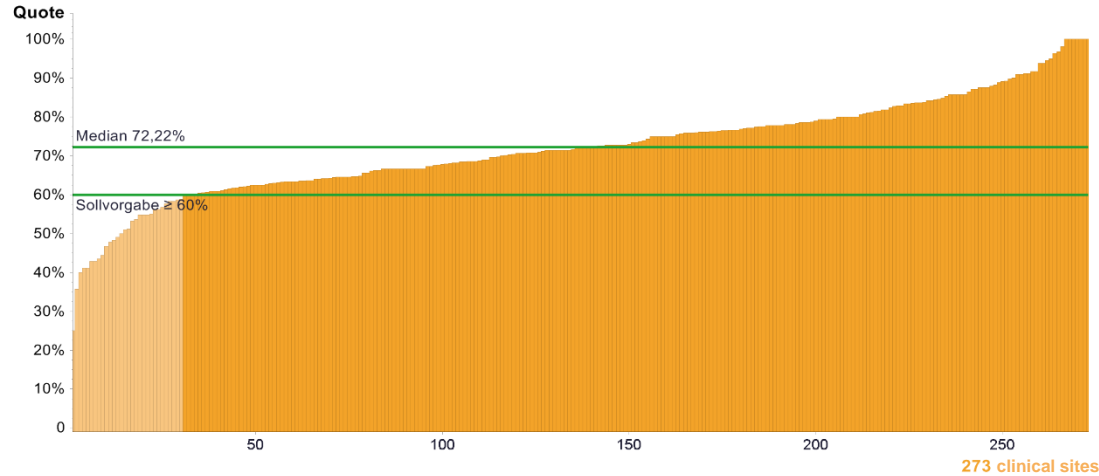
	2009	2010	2011	2012	2013
● Max	-----	100%	100%	100%	100%
95th percentile	-----	100%	100%	100%	100%
75th percentile	-----	100%	100%	100%	100%
Median	-----	94.74%	96.55%	99.32%	96.67%
25th percentile	-----	86.67%	90.00%	91.57%	90.48%
5th percentile	-----	71.43%	76.95%	72.77%	73.00%
● Min	-----	42.86%	33.33%	19.40%	50.00%

Clinical sites with evaluable data		Clinical sites meeting the target	
Number	%	Number	%
193	70.70%	117	60.62%

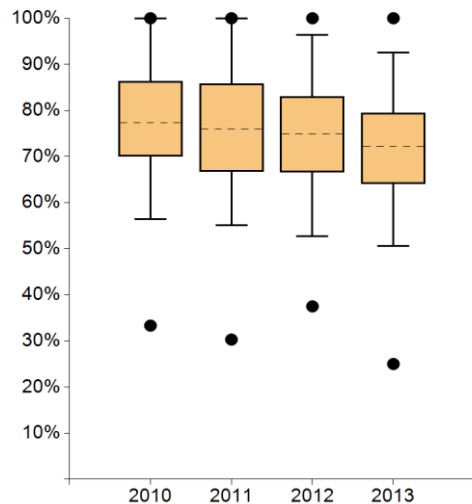
Comment

The reason given for the non-conduct of the recommended therapies is patient refusal. Information is optional. Indicator is quality indicator of the Guideline.

8.1. Recommended chemotherapy in cases of receptor positive and nodal positive diagnostic finding



	Definition of indicator	All clinical sites 2013	
		Median	Range
Numerator	All receptor positive and nodal positive primary cases with invasive breast cancer in which a chemotherapy was recommended	28	2 - 120
Population	Primary cases with invasive breast cancer with receptor positive and nodal positive diagnostic finding	37	2 - 191
Rate	Target $\geq 60\%$	72.22%	25.00% - 100% (6/24) - (76/76)



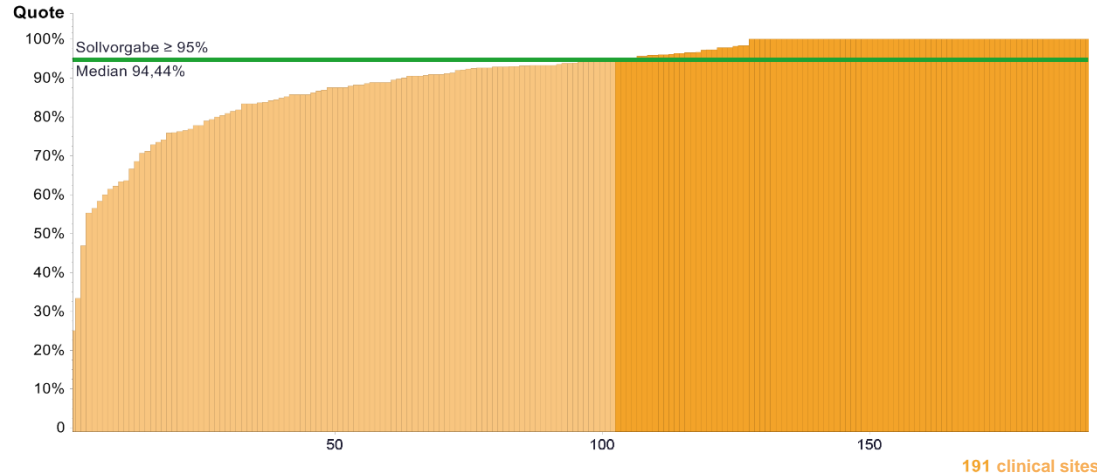
	2009	2010	2011	2012	2013
Max	-----	100%	100%	100%	100%
95th percentile	-----	100%	100%	96.37%	92.50%
75th percentile	-----	86.36%	85.84%	83.06%	79.49%
Median	-----	77.27%	76.06%	75.00%	72.22%
25th percentile	-----	70.00%	66.67%	66.66%	64.15%
5th percentile	-----	56.43%	55.09%	52.74%	50.59%
Min	-----	33.33%	30.30%	37.50%	25.00%

Clinical sites with evaluable data		Clinical sites meeting the target	
Number	%	Number	%
273	100%	243	89.01%

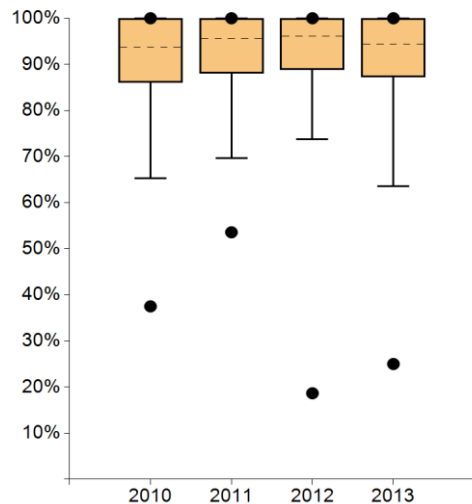
Comment

Recommendations for the conduct of chemotherapy in the case of a receptor pos. and nodal pos. finding decrease over time. The reasons given are: patients' age, comorbidities, neoadjuvant therapies not included in the numerators, luminal A-like patients, micrometastases.

8.2. Completed chemotherapy in cases of receptor positive and nodal positive diagnostic finding (based on year previous to index year)



	Definition of indicator	All clinical sites 2013	
		Median	Range
Numerator	All receptor positive and nodal positive primary cases with invasive breast cancer that were treated with chemotherapy	24	1 - 85
Population	Numerator for indicator no. 8.1 from the year previous to index year	27	4 - 112
Rate	Target $\geq 95\%$	94,44%	25,00% - 100% (1/4) - (53/53)



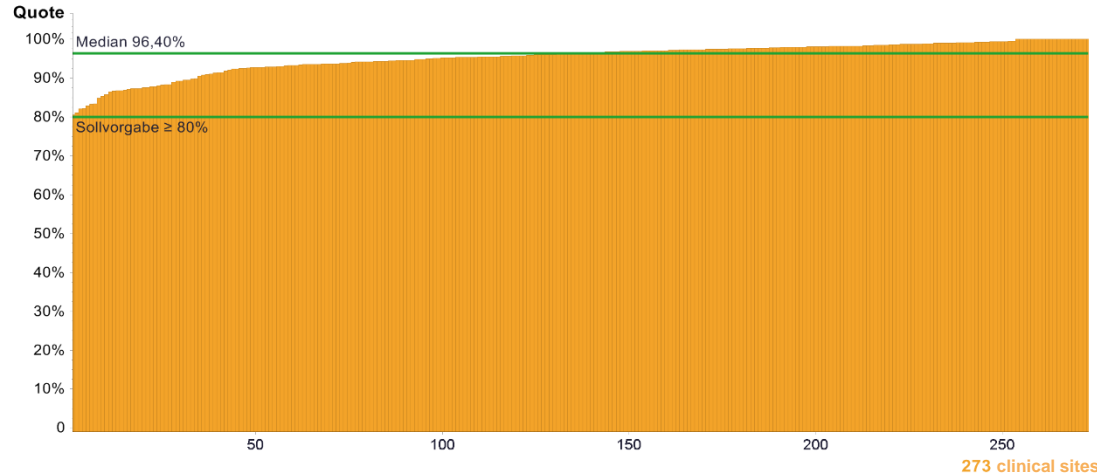
	2009	2010	2011	2012	2013
● Max	-----	100%	100%	100%	100%
95th percentile	-----	100%	100%	100%	100%
75th percentile	-----	100%	100%	100%	100%
Median	-----	93.75%	95.56%	96.15%	94.44%
25th percentile	-----	86.05%	88.00%	88.88%	87.23%
5th percentile	-----	65.22%	69.62%	73.68%	63.53%
● Min	-----	37.50%	53.57%	18.65%	25.00%

Clinical sites with evaluable data		Clinical sites meeting the target	
Number	%	Number	%
191	69.96%	89	46.60%

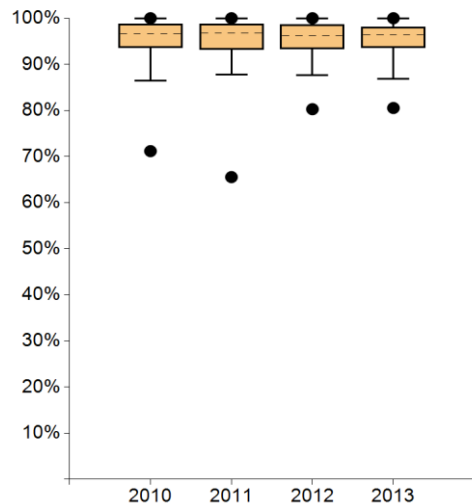
Comment

See also reasons 8.1.
When the recommended therapy is not conducted, this mainly reflects the patient's wish.
Information is optional.
Indicator is quality indicator of the Guideline.

9.1. Recommended endocrine therapy in cases of steroid receptor positive diagnostic finding



	Definition of indicator	All clinical sites 2013	
		Median	Range
Numerator	All steroid receptor positive primary cases in which an endocrine therapy was recommended	124	28 - 618
Population	Primary cases with invasive breast cancer with steroid receptor positive diagnostic finding	128	32 - 666
Rate	Target $\geq 80\%$	96.40%	80.53% - 100% (91/113) - (292/292)

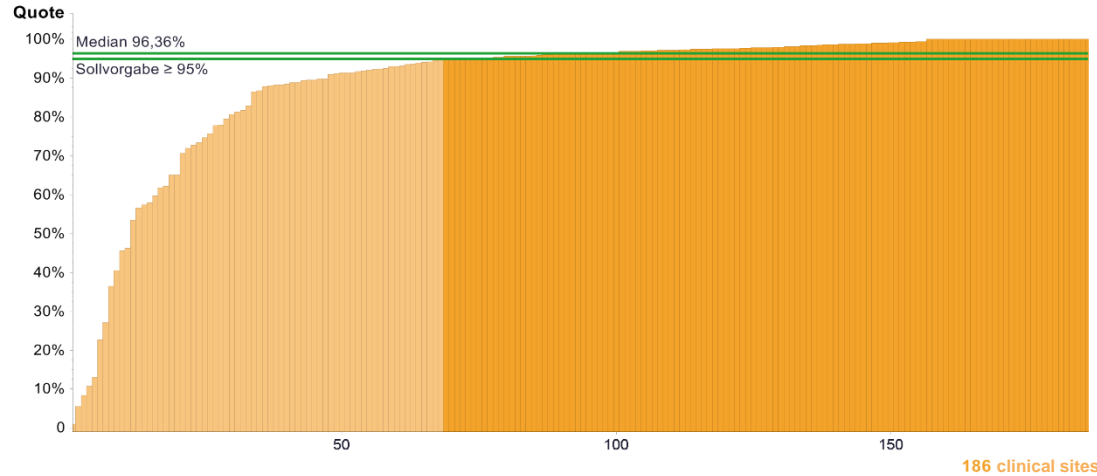


	2009	2010	2011	2012	2013
● Max	-----	100%	100%	100%	100%
95th percentile	-----	100%	100%	100%	100%
75th percentile	-----	98.76%	98.70%	98.60%	98.15%
Median	-----	96.69%	96.77%	96.27%	96.40%
25th percentile	-----	93.60%	93.22%	93.33%	93.62%
5th percentile	-----	86.41%	87.72%	87.64%	86.88%
● Min	-----	71.17%	65.54%	80.27%	80.53%

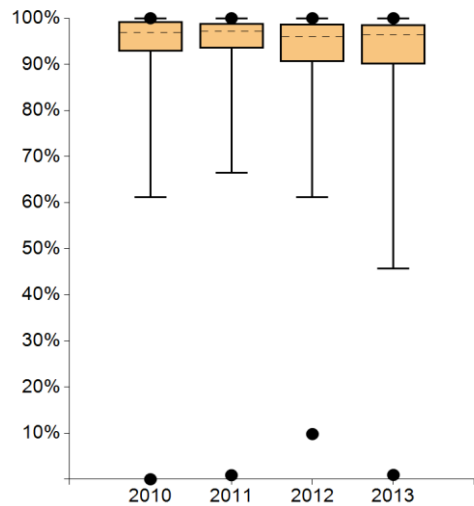
Clinical sites with evaluable data		Clinical sites meeting the target	
Number	%	Number	%
273	100%	273	100%

Comment

9.2. Initiated endocrine therapy in cases of steroid receptive positive diagnostic finding (in relation to the previous index year)



	Definition of indicator	All clinical sites 2013	
		Median	Range
Numerator	All steroid receptor positive primary cases that have been treated with endocrine therapy	107.5	2 - 380
Population	Numerator for indicator no. 9.1 from the year previous to index year	123	21 - 432
Rate	Target ≥ 95%	96.36%	0.94% - 100% (2/213) - (223/223)



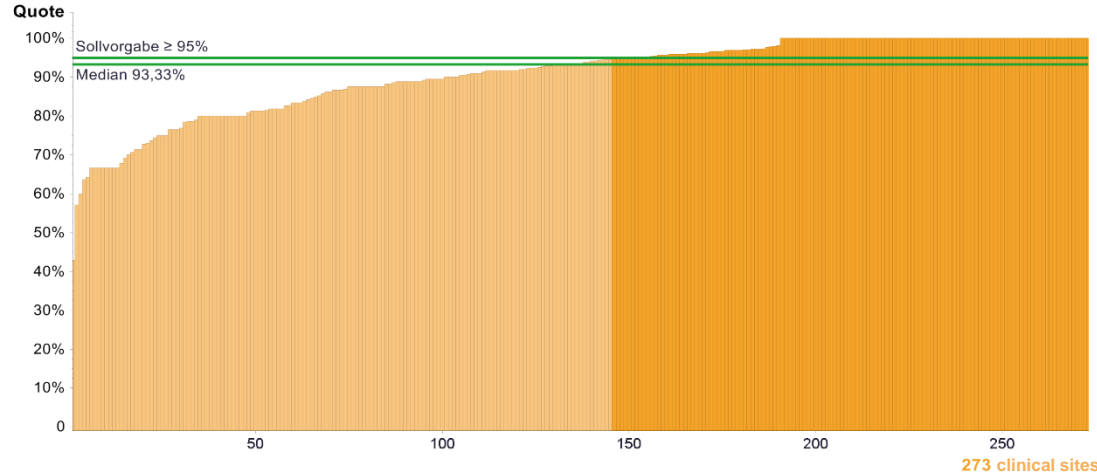
	2009	2010	2011	2012	2013
● Max	-----	100%	100%	100%	100%
95th percentile	-----	100%	100%	100%	100%
75th percentile	-----	99.28%	98.91%	98.71%	98.63%
Median	-----	96.85%	97.19%	96.00%	96.36%
25th percentile	-----	92.78%	93.41%	90.53%	90.03%
5th percentile	-----	61.23%	66.46%	61.13%	45.69%
● Min	-----	0.00%	0.88%	9.80%	0.94%

Clinical sites with evaluable data		Clinical sites meeting the target	
Number	%	Number	%
186	68.13%	118	63.44%

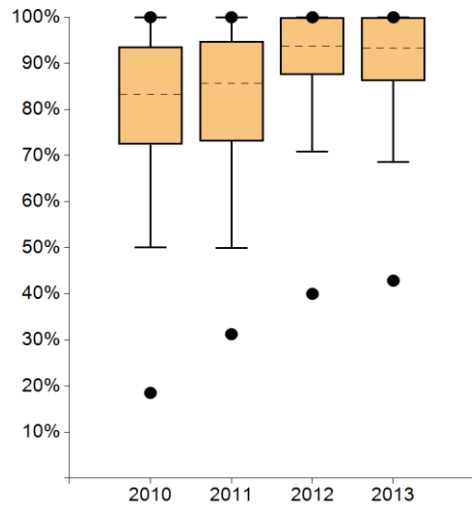
Comment

Centres with low values state that they do not receive any feedback from their colleagues in general practice about the conduct of the recommended therapy. Indicator is optional. Indicator is quality indicator of the Guideline.

10.1. Recommended Trastuzumab therapy over one year in cases of HER-2 positive diagnostic finding



	Definition of indicator	All clinical sites 2013	
		Median	Range
Numerator	All HER2 pos. primary cases, for which a trastuzumab therapy was recommended for over 1 year	18	2 - 82
Population	Primary cases with HER2 pos. diagnostic finding	19	3 - 93
Rate	Target ≥ 95%	93.33%	42.86% - 100% (3/7) - (60/60)



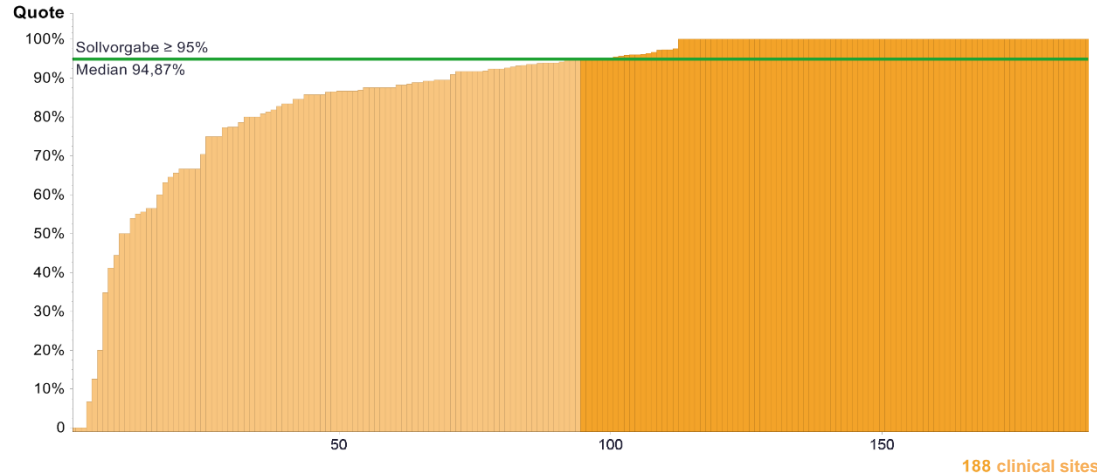
	2009	2010	2011	2012	2013
● Max	-----	100%	100%	100%	100%
95th percentile	-----	100%	100%	100%	100%
75th percentile	-----	93.65%	94.74%	100%	100%
Median	-----	83.33%	85.71%	93.75%	93.33%
25th percentile	-----	72.41%	73.05%	87.50%	86.21%
5th percentile	-----	50.00%	49.86%	70.87%	68.63%
● Min	-----	18.52%	31.25%	40.00%	42.86%

Clinical sites with evaluable data		Clinical sites meeting the target	
Number	%	Number	%
273	100%	128	46.89%

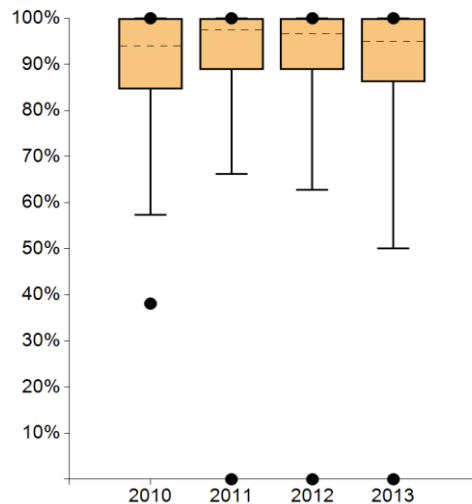
Comment

The reasons given by centres with a low recommendation proportion are small tumours (pT1mic), existing comorbidities or advanced age of patients.

10.2 Completed trastuzumab therapy over 1 year in cases of HER2 positive diagnostic finding



	Definition of indicator	All clinical sites 2013	
		Median	Range
Numerator	All HER2 pos. primary cases that have been treated with a trastuzumab therapy for over 1 year	15	0 - 236
Population	Numerator for indicator no. 10.1 from the year previous to index year	16	2 - 242
Rate	Target ≥ 95%	94.87%	0.00% - 100% (0/8) - (46/46)



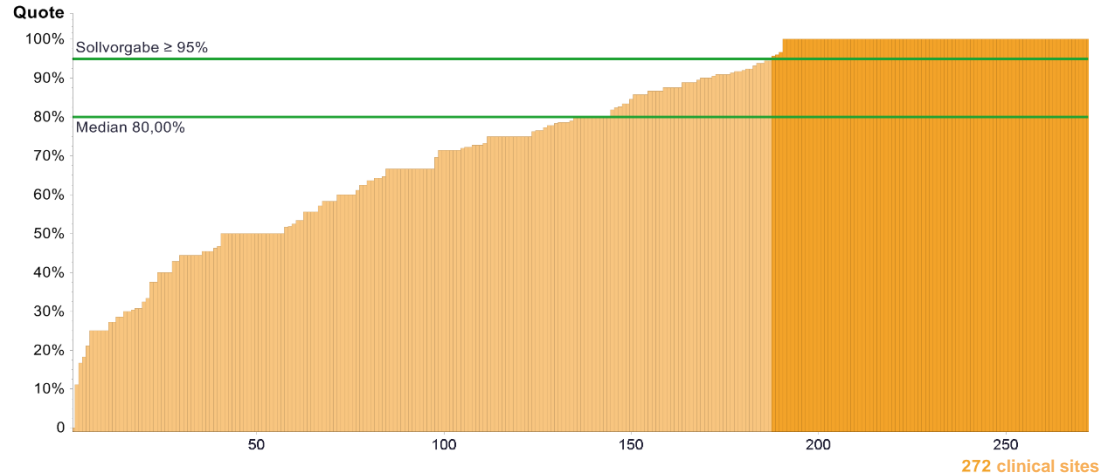
	2009	2010	2011	2012	2013
● Max	-----	100%	100%	100%	100%
95th percentile	-----	100%	100%	100%	100%
75th percentile	-----	100%	100%	100%	100%
Median	-----	93.94%	97.41%	96.66%	94.87%
25th percentile	-----	84.58%	88.89%	88.88%	86.20%
5th percentile	-----	57.39%	66.15%	62.81%	50.00%
● Min	-----	38.10%	0.00%	0.00%	0.00%

Clinical sites with evaluable data		Clinical sites meeting the target	
Number	%	Number	%
188	68.86%	94	50.0%

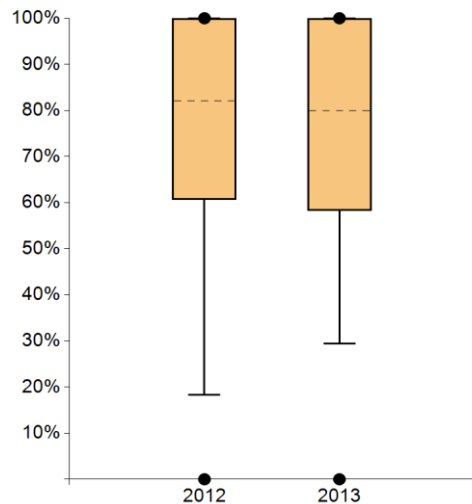
Comment

The reasons given by centres with a low proportion are: therapy refusal by patients, ongoing therapies and death of patients. Indicator is optional. Indicator is quality indicator of the Guideline.

11. Endocrine therapy in cases of metastases



	Definition of indicator	All clinical sites 2013	
		Median	Range
Numerator	Patients for whom an endocrine therapy was begun as a first-line therapy in metastasised stage	6	0 - 57
Population	All patients with steroid receptor positive invasive breast cancer and initial diagnosis of metastases	9	1 - 59
Rate	Target ≥ 95%	80.00%	0.00% - 100% (0/3) - (21/21)



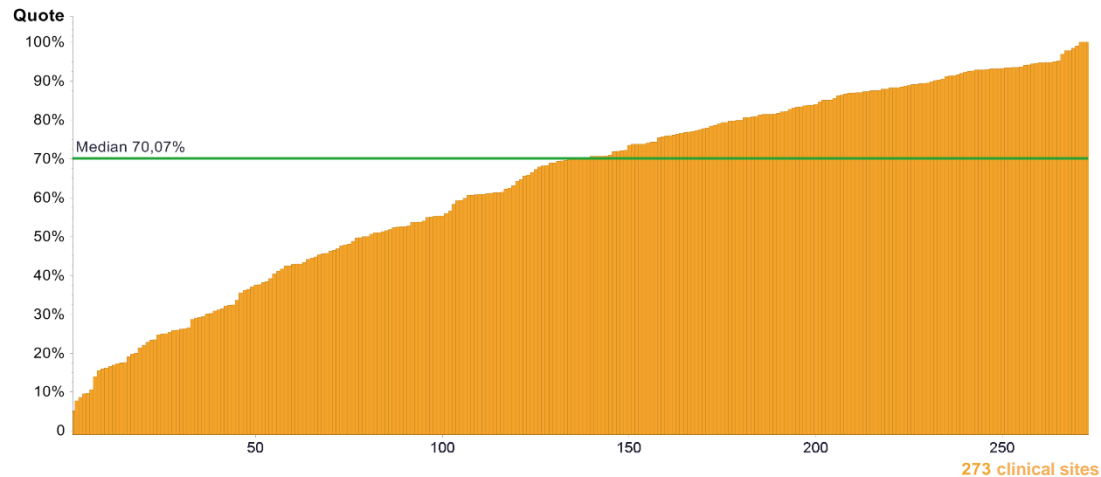
	2009	2010	2011	2012	2013
● Max	----	----	----	100%	100%
95th percentile	----	----	----	100%	100%
75th percentile	----	----	----	100%	100%
Median	----	----	----	82.08%	80.00%
25th percentile	----	----	----	60.63%	58.33%
5th percentile	----	----	----	18.36%	29.36%
● Min	----	----	----	0.00%	0.00%

Clinical sites with evaluable data		Clinical sites meeting the target	
Number	%	Number	%
272	99.63%	85	31.25%

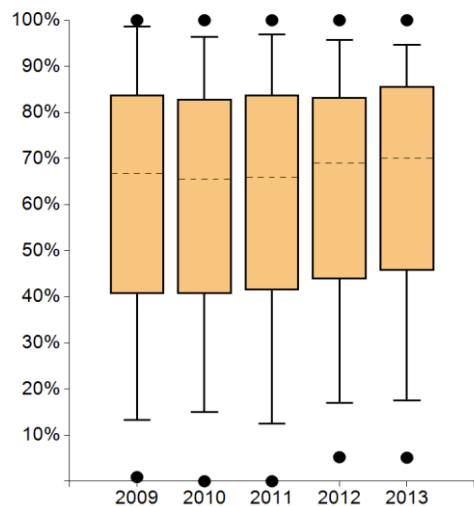
Comment

When endocrine therapy was not begun as a first-line therapy, the reasons given by the centres are that rapid remission was necessary for these patients (e.g. radiation in the case of bone metastasization or extensive local findings) or that the patients died prior to commencement of therapy. Indicator is quality indicator of the Guideline.

12. Psycho-oncologic care (>30 min)



	Definition of indicator	All clinical sites 2013	
		Median	Range
Numerator	Number of primary patients, who received psycho-oncological care (length of consultation > 30 Min.)	103	5 - 525
Population	Primary cases	168	43 - 812
Rate	To be defined	70.07%	5.11% - 100% (12/235) - (143/143)



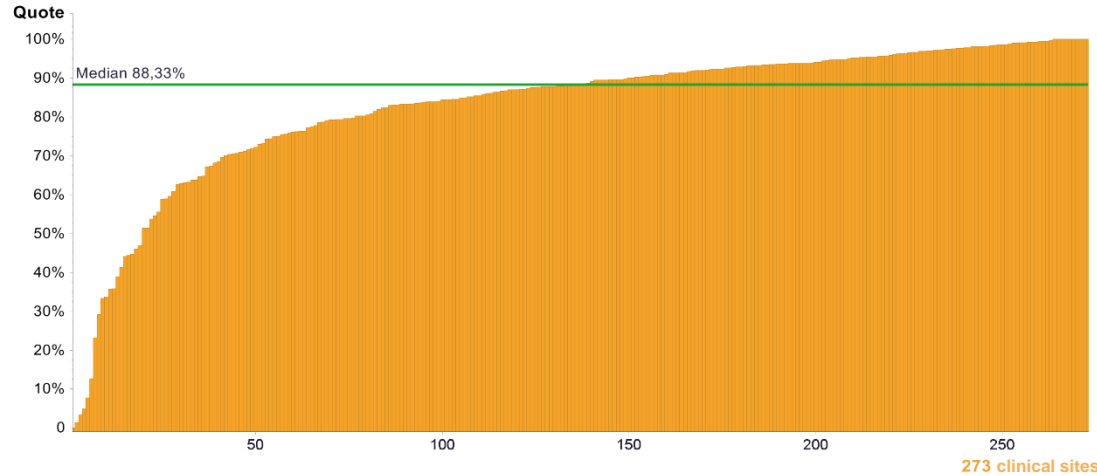
	2009	2010	2011	2012	2013
Max	100%	100%	100%	100%	100%
95th percentile	98.63%	96.36%	96.96%	95.73%	94.60%
75th percentile	83.81%	82.86%	83.75%	83.23%	85.60%
Median	66.74%	65.56%	65.99%	69.02%	70.07%
25th percentile	40.64%	40.64%	41.50%	43.88%	45.74%
5th percentile	13.24%	14.96%	12.55%	17.02%	17.57%
Min	0.90%	0.00%	0.00%	5.22%	5.11%

Clinical sites with evaluable data		Clinical sites meeting the target	
Number	%	Number	%
273	100%	-----	-----

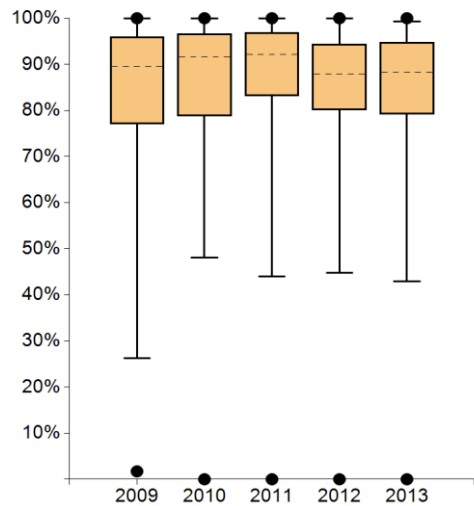
Comment

Centres with a low proportion of conducted consultations >30 min state that the psycho-oncological resources were insufficient, the consultations were not adequately documented or there was no further need. The centre with the lowest presentation rate also has the lowest presentation proportion in the Gynaecological Cancer Centre: the auditor formulated one deviation.
In the case of centres with a 100% presentation proportion, the contact (=i.e. not the consultation >30 min) is also included in the numerator. The auditors undergo corresponding training.

13. Social-service counseling



	Definition of indicator	All clinical sites 2013	
		Median	Range
Numerator	Number of primary patients, who received social services counselling	136	0 - 782
Population	Primary cases	168	43 - 812
Rate	Currently no target value	88.33%	0.00% - 100% (0/175) - (236/236)



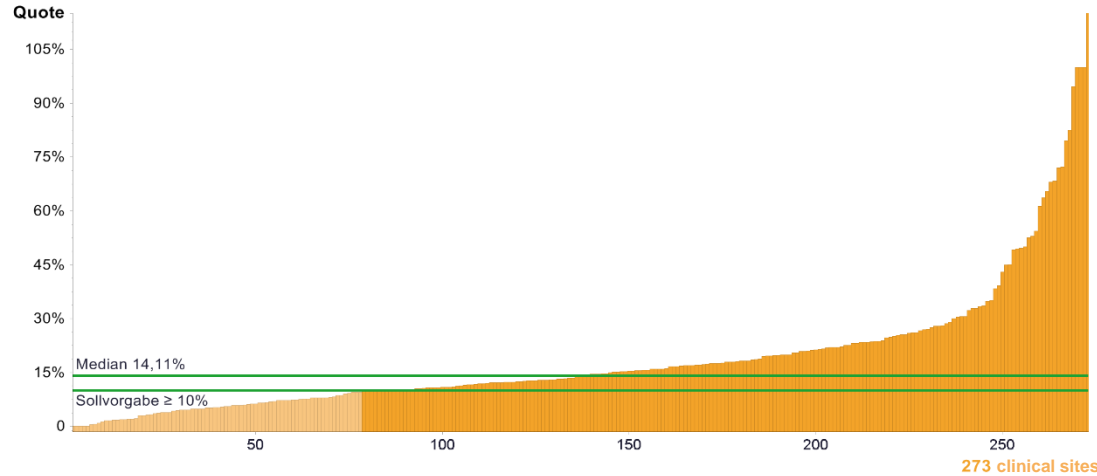
	2009	2010	2011	2012	2013
● Max	100%	100%	100%	100%	100%
95th percentile	100%	100%	100%	100%	99.34%
75th percentile	96.01%	96.64%	96.95%	94.35%	94.76%
Median	89.54%	91.55%	92.19%	87.87%	88.33%
25th percentile	77.10%	78.73%	83.16%	80.16%	79.14%
5th percentile	26.28%	48.14%	43.91%	44.71%	42.97%
● Min	1.71%	0.00%	0.00%	0.00%	0.00%

Clinical sites with evaluable data		Clinical sites meeting the target	
Number	%	Number	%
273	100%	-----	-----

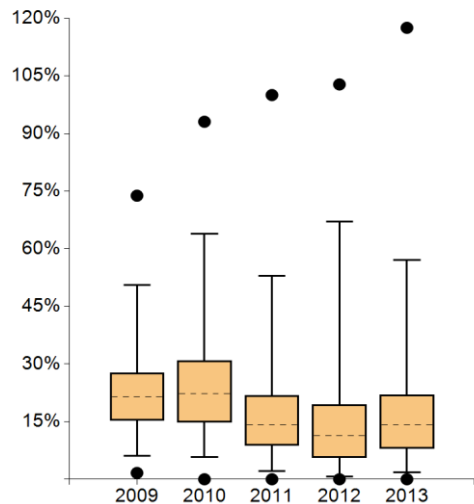
Comment

The 5 centres with the lowest counselling proportions are in Austria, Switzerland and Italy. The tasks of social work there are mainly assumed by institutions outside the clinic. In the case of low presentation proportions the auditors frequently mention limited HR resources.

14. Participation in research study



	Definition of indicator	All clinical sites 2013	
		Median	Range
Numerator	All patients who were included in a study subject to an ethics vote	23	0 - 433
Population	Primary cases	172	44 - 839
Rate	Target $\geq 10\%$	14.11%	0.00% - 117.50% (0/100) - (141/120)



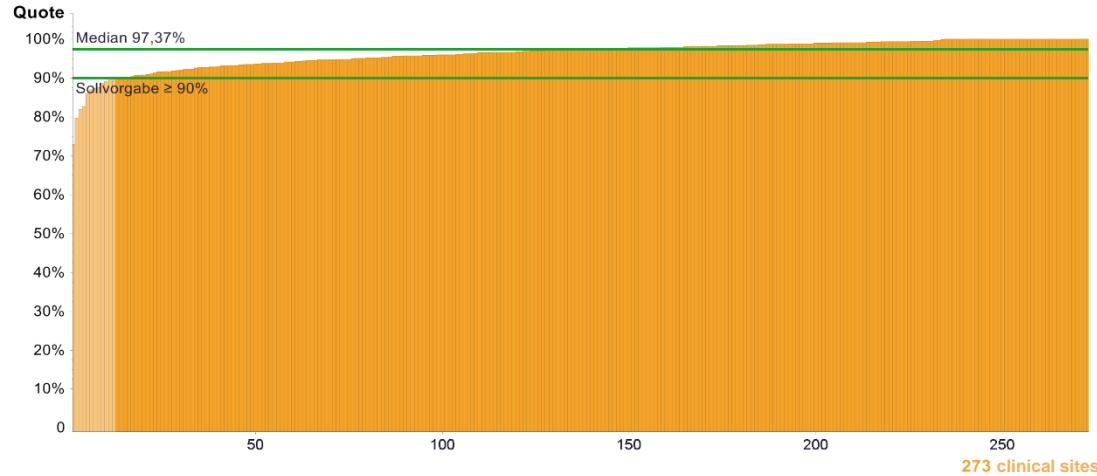
	2009	2010	2011	2012	2013
Max	73.81%	93.05%	100%	102.77%	117.50%
95th percentile	50.56%	63.93%	52.89%	67.01%	57.11%
75th percentile	27.65%	30.86%	21.84%	19.43%	21.99%
Median	21.47%	22.33%	14.14%	11.27%	14.11%
25th percentile	15.24%	14.90%	8.85%	5.68%	7.92%
5th percentile	6.09%	5.77%	2.18%	0.71%	1.85%
Min	1.64%	0.00%	0.00%	0.00%	0.00%

Clinical sites with evaluable data		Clinical sites meeting the target	
Number	%	Number	%
273	100%	195	71.43%

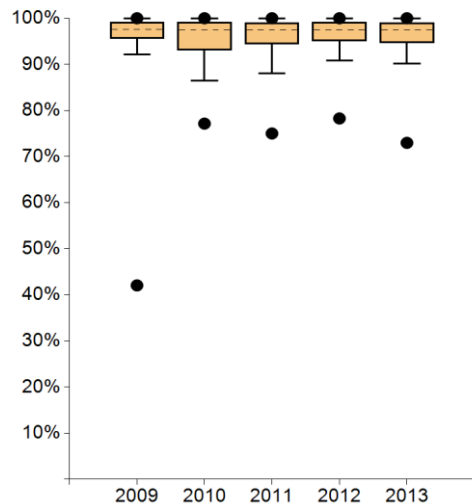
Comment

The centres with a high study proportion participate in care research studies (BRENDA, marker studies) or studies from other disciplines (psycho-oncology). There are increasing reports of studies being conducted in cooperation with practising doctors.

15. Pre-therapeutic histological confirmation



	Definition of indicator	All clinical sites 2013	
		Median	Range
Numerator	Patients with pretherapeutic histological diagnosis confirmation by means of a punch or vacuum biopsy	154	37 - 802
Population	Patients with initial procedure and histology of invasive breast cancer or DCIS as primary disease	158	39 - 837
Rate	Target ≥ 90%	97.37%	72.97% - 100% (54/74) - (399/399)



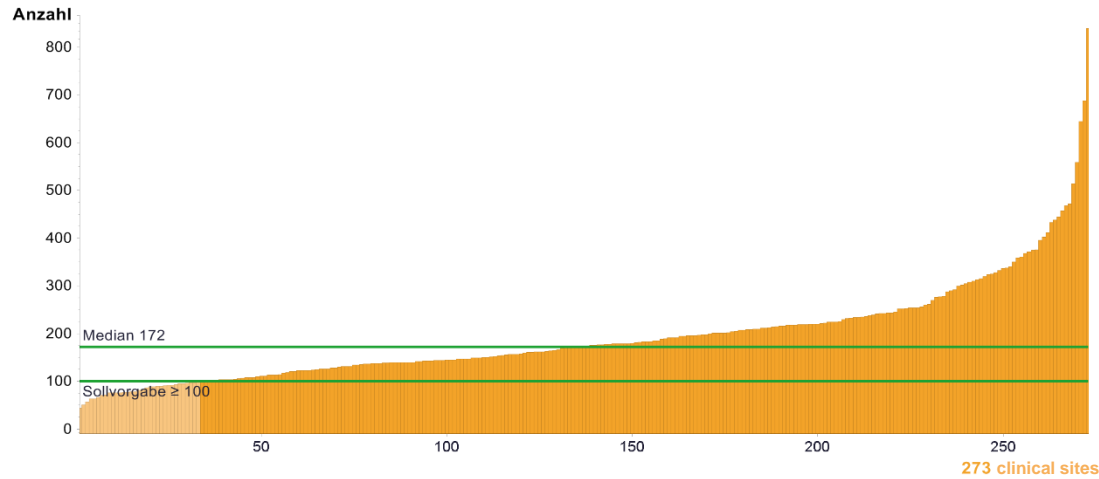
	2009	2010	2011	2012	2013
● Max	100%	100%	100%	100%	100%
95th percentile	100%	100%	100%	100%	100%
75th percentile	99.19%	99.19%	98.96%	99.13%	99.06%
Median	97.56%	97.37%	97.47%	97.46%	97.37%
25th percentile	95.55%	93.09%	94.36%	95.04%	94.70%
5th percentile	92.11%	86.51%	88.09%	90.79%	90.19%
● Min	42.05%	77.14%	75.00%	78.26%	72.97%

Clinical sites with evaluable data		Clinical sites meeting the target	
Number	%	Number	%
273	100%	261	95.60%

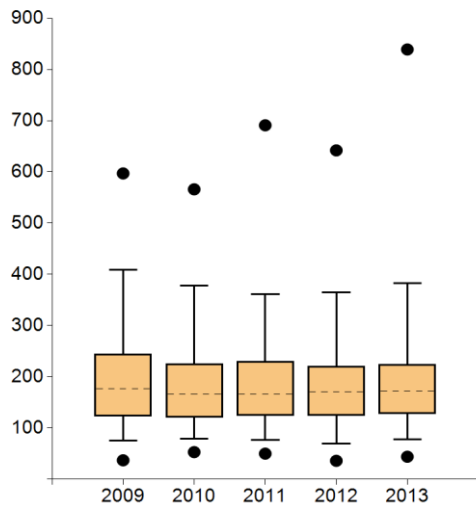
Comment

The reasons given by centres for not meeting the target are: micro-calcifications, patients of an advanced age, Marcumar therapy, patients with condition after benign/unclear punch biopsy, hence PE. Auditors formulated corresponding information/deviations. Indicator is quality indicator of the Guideline.

16. Primary cases BC



	Definition of indicator	All clinical sites 2013	
		Median	Range
Number	Primary cases	172	44 - 839
	Target ≥ 100		



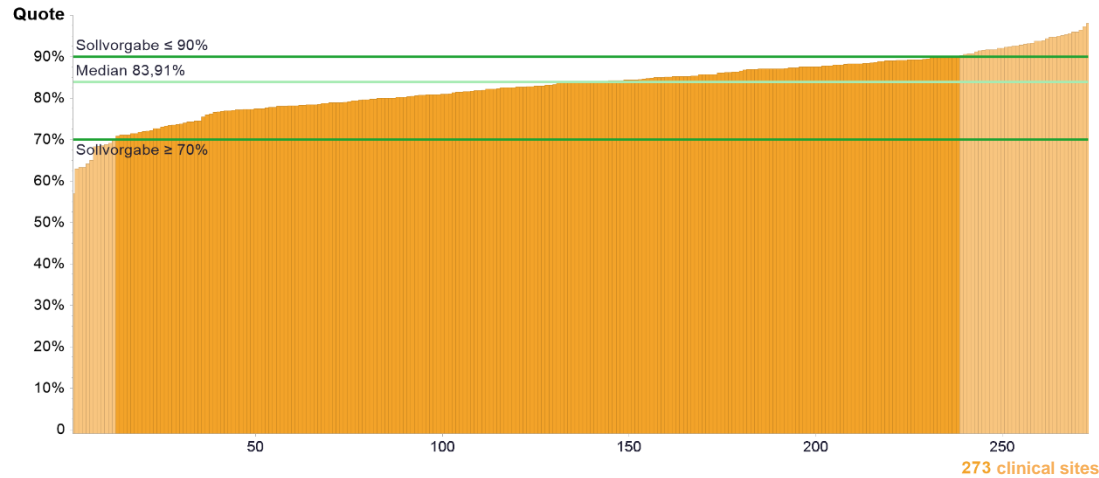
	2009	2010	2011	2012	2013
Max	597.00	566.00	691.00	642.00	839.00
95th percentile	408.75	377.95	361.00	365.15	383.00
75th percentile	244.75	225.75	230.00	221.25	224.00
Median	176.50	166.50	166.00	170.50	172.00
25th percentile	122.75	121.00	124.50	123.75	128.00
5th percentile	75.00	79.10	76.75	69.70	77.60
Min	37.00	53.00	50.00	36.00	44.00

Clinical sites with evaluable data		Clinical sites meeting the target	
Number	%	Number	%
273	100%	240	87.91%

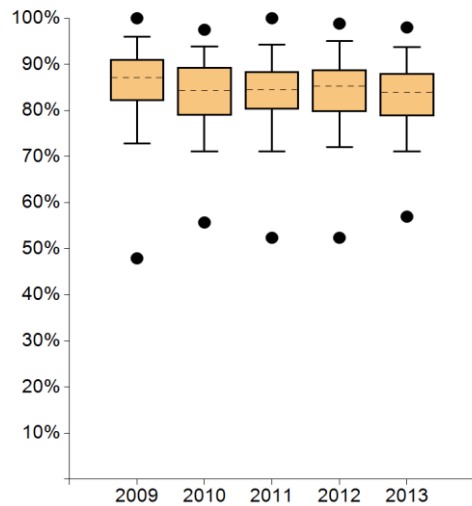
Comment

All centres which do not meet the target of 100 primary cases/year are cooperative sites. From 2015 they must show evidence of at least 50 primary cases for the follow-up audits, too.

17. Breast conserving therapy in cases of pT1 primary cases



	Definition of indicator	All clinical sites 2013	
		Median	Range
Numerator	Number BCT (final state after surgery) in cases of pT1	62	7 - 405
Population	Surgically treated primary cases with pT1	77	9 - 475
Rate	Target 70 - 90%	83.91%	56.96% - 98.00% (45/79) - (49/50)



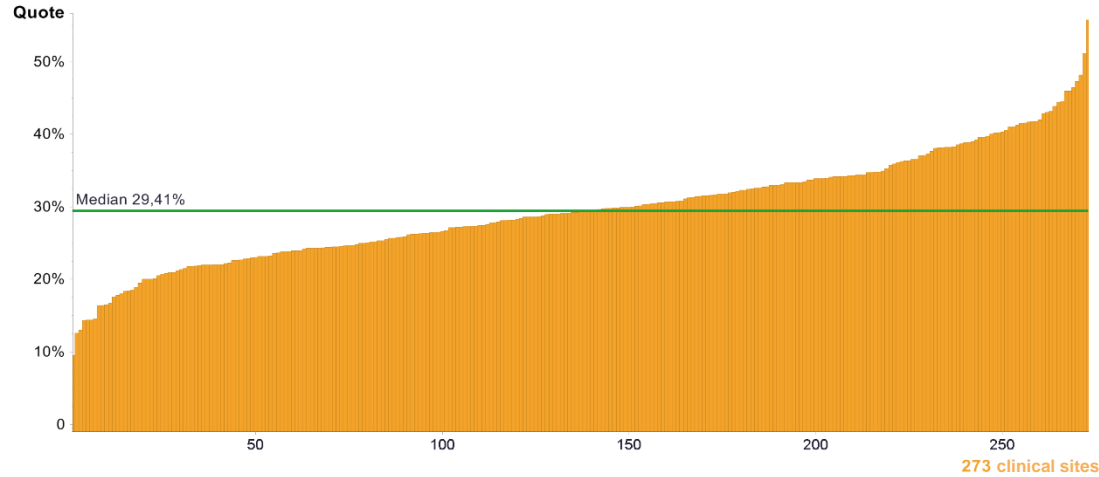
	2009	2010	2011	2012	2013
Max	100%	97.50%	100%	98.83%	98.00%
95th percentile	95.96%	93.82%	94.22%	95.05%	93.75%
75th percentile	91.07%	89.34%	88.46%	88.88%	88.03%
Median	87.07%	84.29%	84.46%	85.26%	83.91%
25th percentile	82.07%	78.87%	80.25%	79.69%	78.79%
5th percentile	72.87%	71.13%	71.13%	72.04%	71.07%
Min	47.92%	55.70%	52.38%	52.38%	56.96%

Clinical sites with evaluable data		Clinical sites meeting the target	
Number	%	Number	%
273	100%	226	82.78%

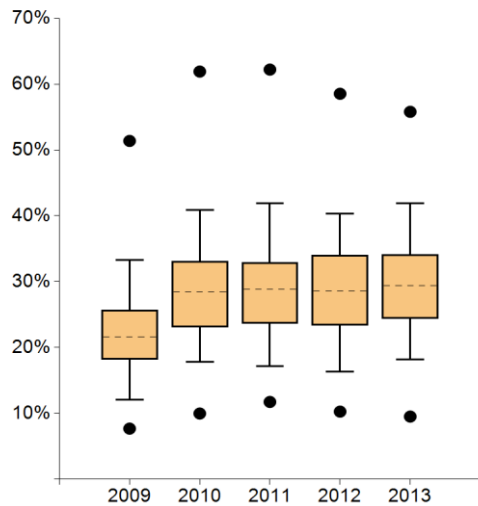
Comment

The reasons given by the centres that do not reach the target are: multi-centric/-focal tumours, familial mammary carcinoma, extended DCIS and patient wish. For the indicator a target corridor is to be given (70-90%) in order to depict the variance of the possible decisions.

18. Mastectomies primary cases



	Definition of indicator	All clinical sites 2013	
		Median	Range
Numerator	Number of mastectomies (final state after surgery)	43	9 - 263
Population	Surgically treated primary cases	156	39 - 793
Rate	Currently no target value	29.41%	9.52% - 55.79% (20/210) - (53/95)



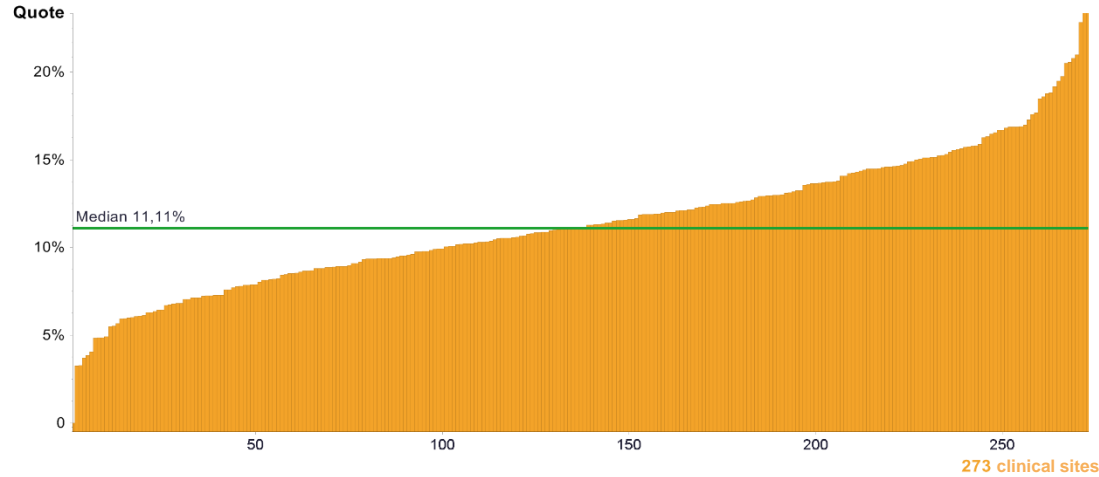
	2009	2010	2011	2012	2013
Max	51.37%	61.90%	62.20%	58.53%	55.79%
95th percentile	33.30%	40.88%	41.85%	40.37%	41.85%
75th percentile	25.68%	33.09%	32.91%	34.07%	34.15%
Median	21.61%	28.49%	28.83%	28.57%	29.41%
25th percentile	18.18%	23.10%	23.65%	23.37%	24.41%
5th percentile	12.08%	17.81%	17.21%	16.33%	18.21%
Min	7.69%	9.98%	11.74%	10.27%	9.52%

Clinical sites with evaluable data		Clinical sites meeting the target	
Number	%	Number	%
273	100%	-----	-----

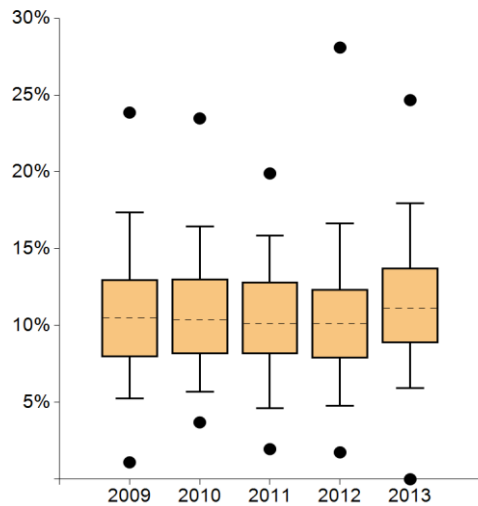
Comment

The reasons given for high mastectomy rates are patient wish, T3/T4 tumours, multi-centric mammary carcinoma and increased incidence of familial mammary carcinomas.

19. DCIS in initial procedure primary cases (pTiS)



	Definition of indicator	All clinical sites 2013	
		Median	Range
Numerator	Number pTi's	17	0 - 87
Population	Surgically treated primary cases	156	39 - 793
Rate	Currently no target value	11.11%	0.00% - 24.67% (0/69) - (37/150)



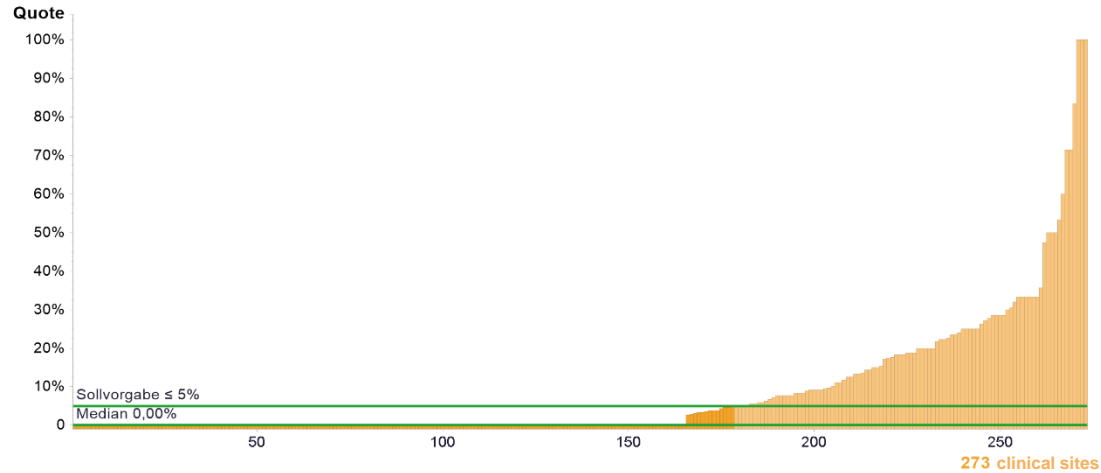
	2009	2010	2011	2012	2013
Max	23.86%	23.48%	19.90%	28.09%	24.67%
95th percentile	17.38%	16.45%	15.86%	16.66%	17.97%
75th percentile	12.99%	13.04%	12.84%	12.38%	13.75%
Median	10.50%	10.39%	10.14%	10.14%	11.1%
25th percentile	7.96%	8.14%	8.17%	7.89%	8.85%
5th percentile	5.26%	5.69%	4.62%	4.76%	5.94%
Min	1.10%	3.70%	1.96%	1.75%	0.00%

Clinical sites with evaluable data		Clinical sites meeting the target	
Number	%	Number	%
273	100%	-----	-----

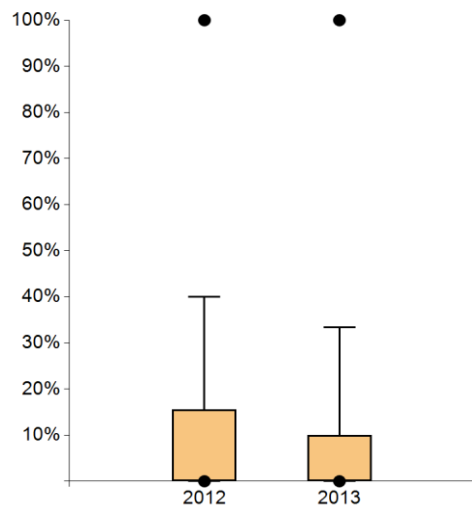
Comment

Indicator is deleted from 2015 as it is recorded in future in the basic data.

20. LN dissection in cases of DCIS



	Definition of indicator	All clinical sites 2013	
		Median	Range
Numerator	Patients with axillary lymph node dissection	0	0 - 17
Population	Patients with a primary diagnosis of DCIS and completed surgical	13	1 - 68
Rate	Target ≤ 5%	0.00%	0.00% - 100% (0/1) - (12/12)



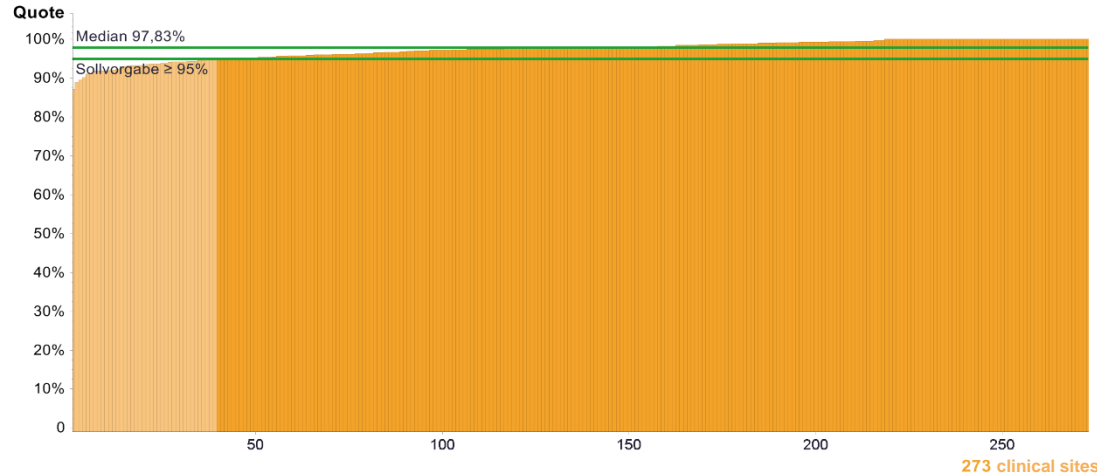
	2009	2010	2011	2012	2013
Max	----	----	----	100%	100%
95th percentile	----	----	----	40.00%	33.33%
75th percentile	----	----	----	15.50%	10.00%
Median	----	----	----	0.00%	0.00%
25th percentile	----	----	----	0.00%	0.00%
5th percentile	----	----	----	0.00%	0.00%
Min	----	----	----	0.00%	0.00%

Clinical sites with evaluable data		Clinical sites meeting the target	
Number	%	Number	%
273	100%	181	66.30%

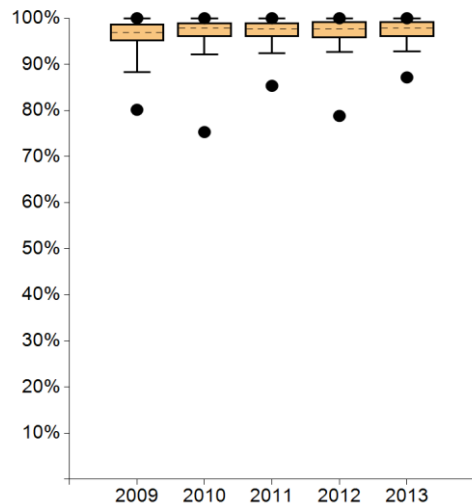
Comment

Centres with frequent LN dissection mostly have a small population with a high impact on the proportion when the patient undergoes LN dissection.
 Reasons for LN dissection in DCIS: large DCIS, in particular invasive mammary carcinoma, G3. LN dissection is almost only done as SLNE.
 Indicator is quality indicator of the Guideline.

21. Determination of the nodal status in cases of inv. Br-Ca



	Definition of indicator	All clinical sites 2013	
		Median	Range
Numerator	Number of primary cases with inv. breast cancer for which the nodal status was determined	132	33 - 678
Population	Surgically treated primary cases With invasive breast cancer	136	33 - 699
Rate	Target \geq 95%	97.83%	87.16% - 100% (95/109) - (335/335)



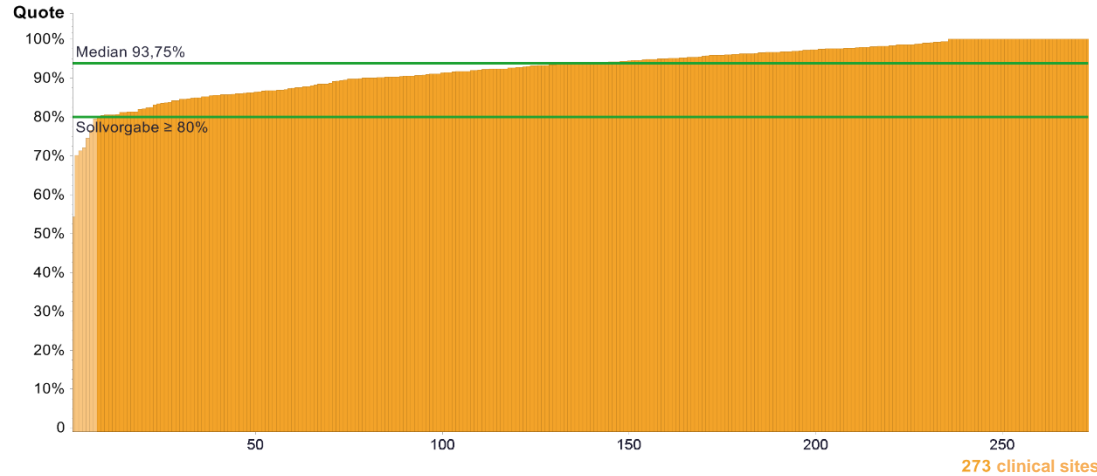
	2009	2010	2011	2012	2013
● Max	100%	100%	100%	100%	100%
95th percentile	100%	100%	100%	100%	100%
75th percentile	98.73%	99.07%	99.08%	99.30%	99.33%
Median	96.93%	97.78%	97.76%	97.70%	97.83%
25th percentile	95.05%	96.03%	95.94%	95.65%	96.00%
5th percentile	88.35%	92.11%	92.37%	92.66%	92.83%
● Min	80.14%	75.31%	85.34%	78.81%	87.16%

Clinical sites with evaluable data		Clinical sites meeting the target	
Number	%	Number	%
273	100%	234	85,71%

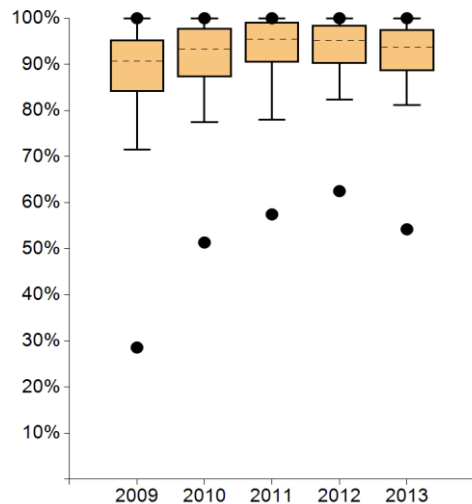
Comment

If nodal status was not determined, the reasons given are: primary palliative situation, general condition and patient's age.

22. SLNE only in cases of pN0 (GL QI)



	Definition of indicator	All clinical sites 2013	
		Median	Range
Numerator	Patients with a sentinel node biopsy only	74	2 - 362
Population	Patients with invasive breast cancer as a primary disease and negative pN staging without preoperative tumour-specific therapy	81	2 - 380
Rate	Target ≥ 80%	93.75%	54.22% - 100% (45/83) - (222/222)



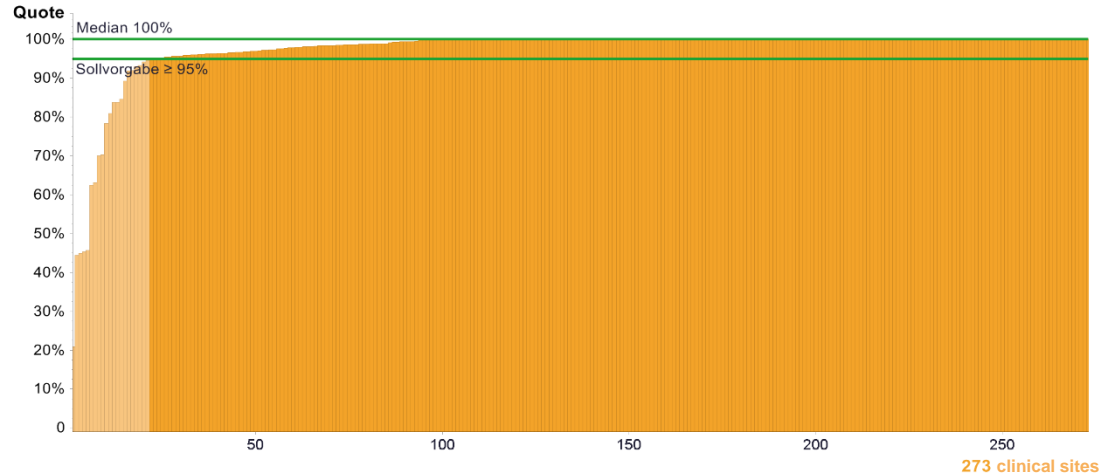
	2009	2010	2011	2012	2013
● Max	100%	100%	100%	100%	100%
95th percentile	100%	100%	100%	100%	100%
75th percentile	95.29%	97.85%	99.21%	98.45%	97.62%
Median	90.72%	93.30%	95.45%	95.20%	93.75%
25th percentile	84.10%	87.19%	90.43%	90.14%	88.52%
5th percentile	71.48%	77.47%	78.00%	82.29%	81.17%
● Min	28.57%	51.35%	57.45%	62.50%	54.22%

Clinical sites with evaluable data		Clinical sites meeting the target	
Number	%	Number	%
273	100%	266	97.44%

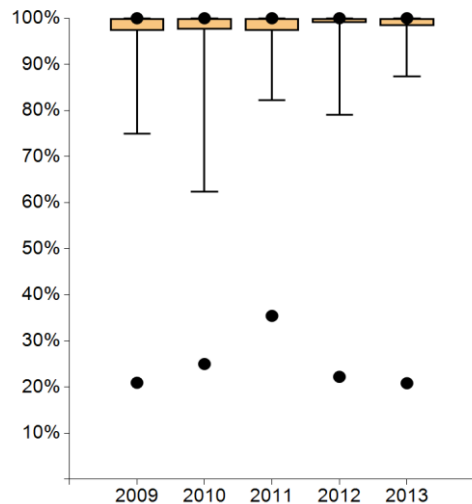
Comment

The centres which not only performed a sole sentinel LNE stated that intraoperatively other lymph nodes were suspect which were then dissected or that intraoperatively the preoperatively marked lymph nodes were not detectable. Indicator is quality indicator of the Guideline.

23. Intraoperative specimen radio-/sonography



	Definition of indicator	All clinical sites 2013	
		Median	Range
Numerator	Operations with intra-operative specimen x-ray in cases of mammographic wire localisation and operations with intraoperative specimen sonography in cases of sonographic wire localisation	55	4 - 430
Population	Operations with preoperative wire localisation guided by mammography or sonography	56	4 - 462
Rate	Target ≥ 95%	100%	20.83% - 100% (25/120) - (341/341)



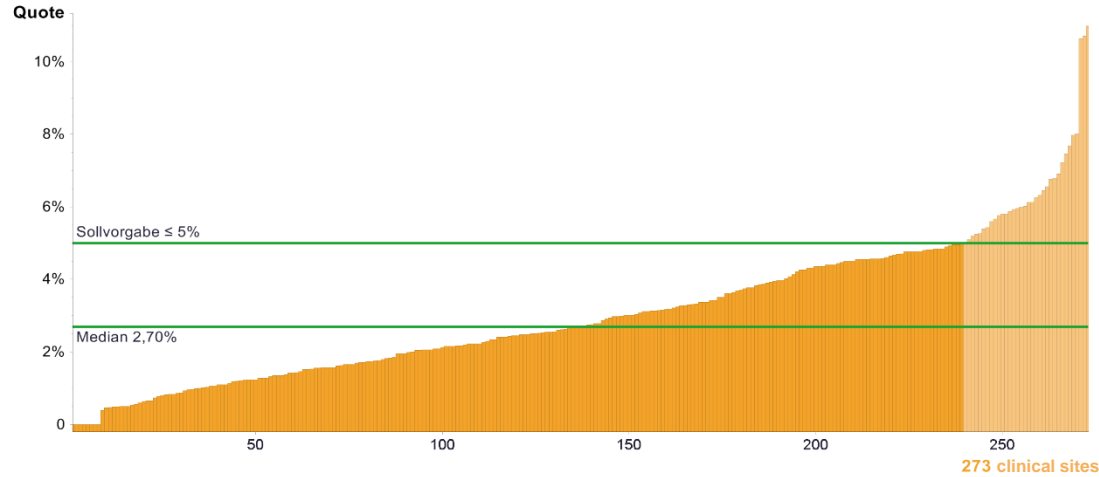
	2009	2010	2011	2012	2013
Max	100%	100%	100%	100%	100%
95th percentile	100%	100%	100%	100%	100%
75th percentile	100%	100%	100%	100%	100%
Median	100%	100%	100%	100%	100%
25th percentile	97.29%	97.53%	97.29%	99.00%	98.36%
5th percentile	74.99%	62.42%	82.22%	78.99%	87.36%
Min	20.93%	25.00%	35.44%	22.22%	20.83%

Clinical sites with evaluable data		Clinical sites meeting the target	
Number	%	Number	%
273	100%	252	92.31%

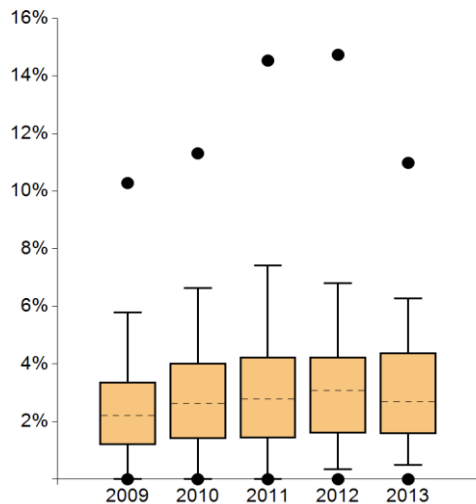
Comment

The centres state that in the case of preoperatively sonographically marked tumours, which are palpable, no intraoperative sonography is performed. Intraoperative radiography is performed in the case of preoperative radiographically marked findings.

24. Revision operations primary cases



	Definition of indicator	All clinical sites 2013	
		Median	Range
Numerator	Revision surgery due to postoperative complications (only surgically treated primary cases)	4	0 - 44
Population	Surgically treated primary cases	156	39 - 793
Rate	Target ≤ 5%	2.70%	0.00% - 10.98% (0/53) - (9/82)



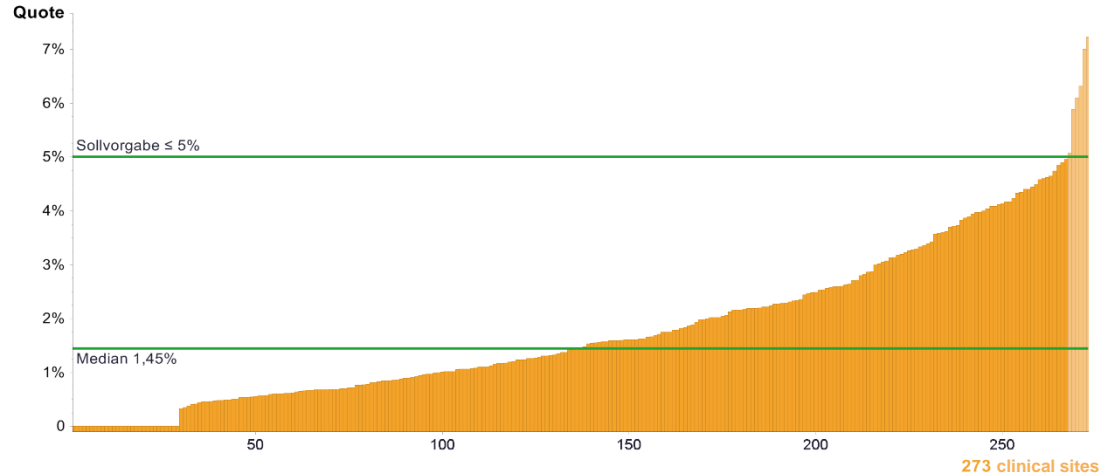
	2009	2010	2011	2012	2013
Max	10.28%	11.31%	14.53%	14.73%	10.98%
95th percentile	5.78%	6.63%	7.42%	6.80%	6.28%
75th percentile	3.38%	4.04%	4.25%	4.24%	4.40%
Median	2.21%	2.63%	2.78%	3.07%	2.70%
25th percentile	1.19%	1.40%	1.43%	1.60%	1.57%
5th percentile	0.00%	0.00%	0.00%	0.34%	0.50%
Min	0.00%	0.00%	0.00%	0.00%	0.00%

Clinical sites with evaluable data		Clinical sites meeting the target	
Number	%	Number	%
273	100%	240	87.91%

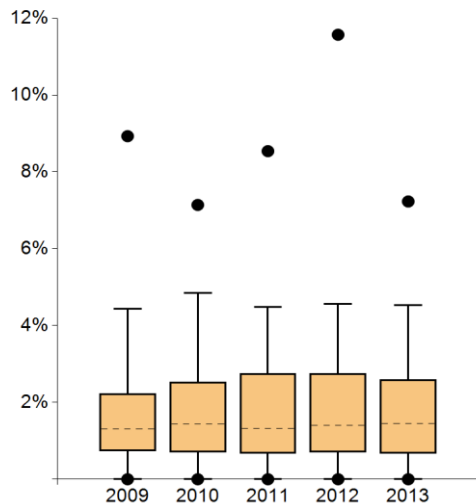
Comment

The reasons given for a high rate of revision operations are mainly haematomas and lymphocoeles. The centres with a high rate discussed their cases with the auditors or in quality circles.

25. Postoperative wound infection primary cases



	Definition of indicator	All clinical sites 2013	
		Median	Range
Numerator	Number of postoperative wound infections after operations on primary cases	2	0 - 14
Population	Surgically treated primary cases	156	39 - 793
Rate	Target ≤ 5%	1,45%	0.00% - 7.23% (0/45) - (6/83)



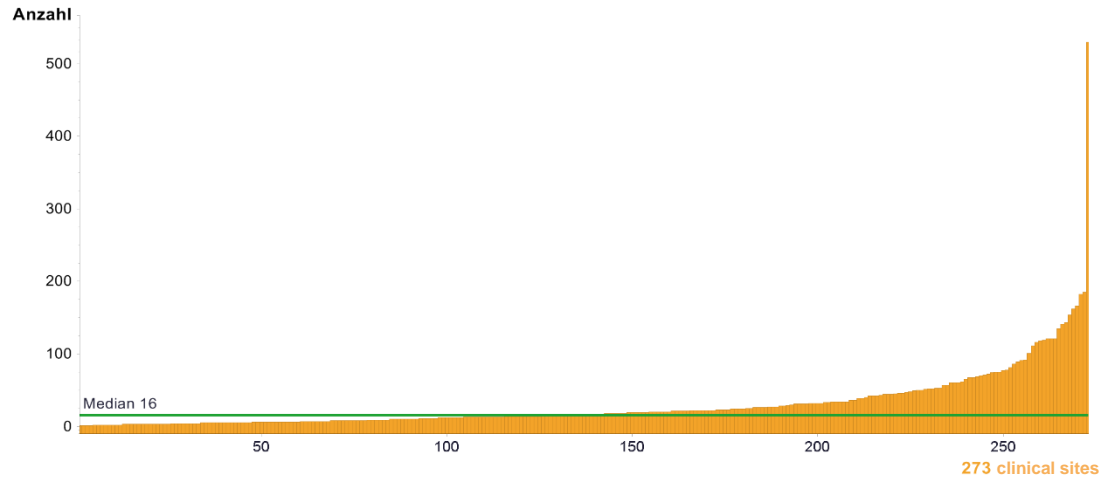
	2009	2010	2011	2012	2013
Max	8.93%	7.14%	8.54%	11.57%	7.23%
95th percentile	4.43%	4.86%	4.49%	4.57%	4.53%
75th percentile	2.23%	2.53%	2.75%	2.75%	2.59%
Median	1.31%	1.44%	1.32%	1.41%	1.45%
25th percentile	0.74%	0.71%	0.67%	0.71%	0.68%
5th percentile	0.00%	0.00%	0.00%	0.00%	0.00%
Min	0.00%	0.00%	0.00%	0.00%	0.00%

Clinical sites with evaluable data		Clinical sites meeting the target	
Number	%	Number	%
273	100%	267	97,80%

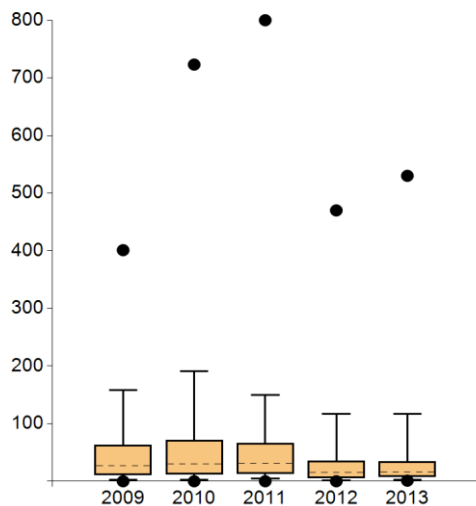
Comment

Indicator deleted from 2015 as in senology there is no suitable score for the valid recording of wound infection.

26. Breast reconstruction



	Definition of indicator	All clinical sites 2013	
		Median	Range
Number	Number of breast reconstructions (5-883.-ff, 5-885.-ff, 5-886.1-2, 5-876.1-3, 5-889.2-5, 5-905.0a)	16	1 - 530
	Currently no target value		



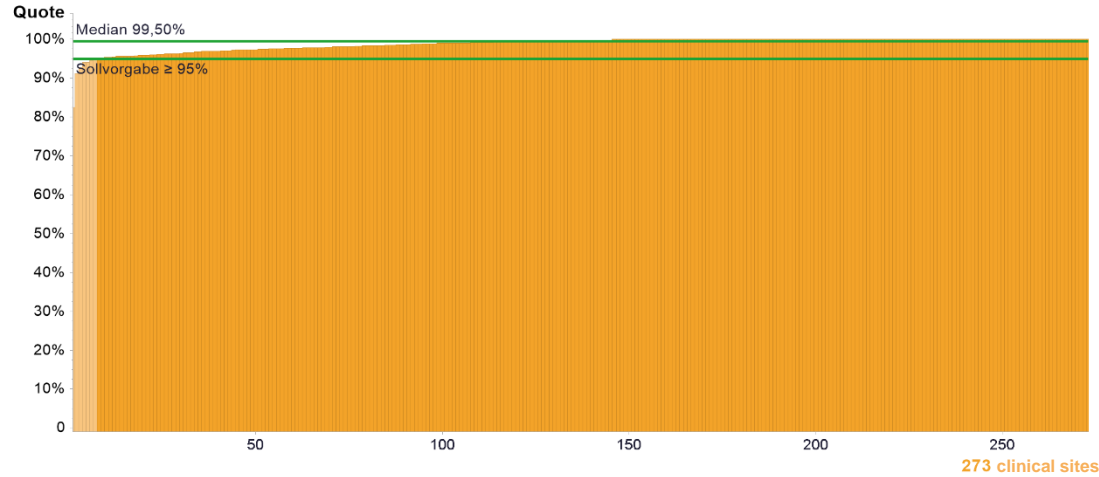
	2009	2010	2011	2012	2013
Max	401.00	723.00	800.00	470.00	530.00
95th percentile	158.00	191.00	149.80	116.30	116.80
75th percentile	63.00	71.00	66.00	35.25	34.00
Median	27.00	30.00	31.00	15.00	16.00
25th percentile	11.00	12.50	1.00	6.00	8.00
5th percentile	2.00	2.10	5.00	1.00	3.00
Min	0.00	0.00	0.00	0.00	1.00

Clinical sites with evaluable data		Clinical sites meeting the target	
Number	%	Number	%
273	100%	-----	-----

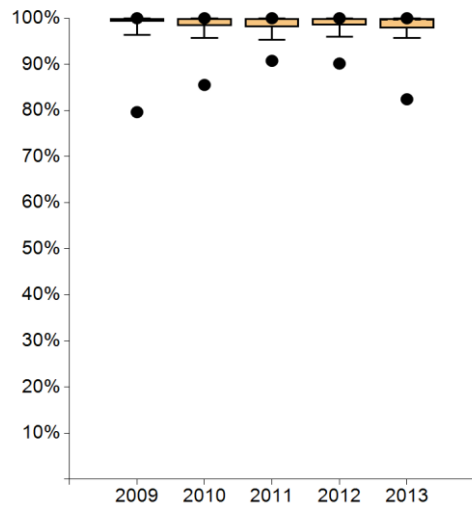
Comment

Centres with few reconstructions state that they cannot record the number of reconstructions because these data are collected by plastic surgery. Furthermore, sec. reconstructions are often not recorded. The indicator will, therefore, be adjusted from 2015 onwards and the number of operated primary cases from the indicator for the previous year will then be included in the numerator. The evaluations show that own tissue reconstructions are mainly performed in cooperation with plastic surgeons and that the proportion of reconstructions increases as cooperation with plastic surgery grows.

27. Specification of the resection margin and safety margin



	Definition of indicator	All clinical sites 2013	
		Median	Range
Numerator	The resection margin and safety margin specified by the pathologist	153	39 - 772
Population	Surgically treated primary cases	156	39 - 793
Rate	Target ≥ 95%	99.50%	82.42% - 100% (75/91) - (395/395)



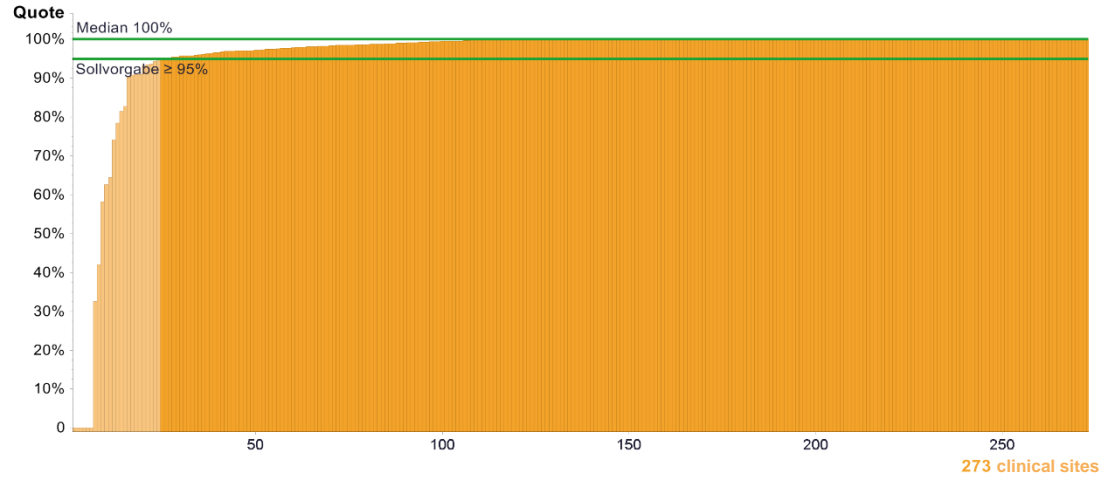
	2009	2010	2011	2012	2013
Max	100%	100%	100%	100%	100%
95th percentile	100%	100%	100%	100%	100%
75th percentile	100%	100%	100%	100%	100%
Median	100%	100%	99.74%	99.92%	99.50%
25th percentile	99.33%	98.37%	98.06%	98.44%	97.89%
5th percentile	96.33%	95.69%	95.36%	95.98%	95.65%
Min	79.63%	85.53%	90.76%	90.17%	82.42%

Clinical sites with evaluable data		Clinical sites meeting the target	
Number	%	Number	%
273	100%	267	97,80%

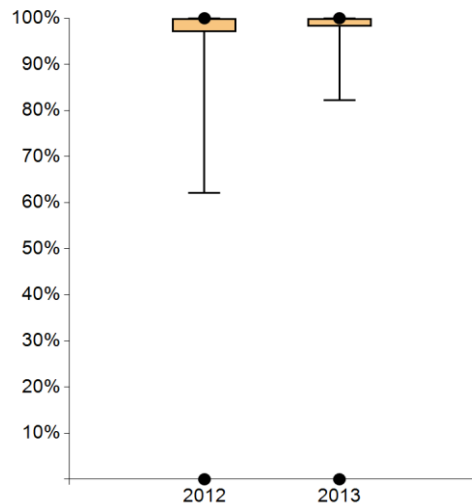
Comment

The reasons given for not meeting the target are pT0 results and complete tumour resection during biopsy.

28. Report to the cancer registry



	Definition of indicator	All clinical sites 2013	
		Median	Range
Numerator	Patients reported to a hospital and/or epidemiological cancer registry	167	0 - 839
Population	All patients with histologically confirmed primary disease of invasive breast cancer and/or DCIS	172	44 - 839
Rate	Target $\geq 95\%$	100%	0.00% - 100% (0/105) - (839/839)



	2009	2010	2011	2012	2013
● Max	----	----	----	100%	100%
95th percentile	----	----	----	100%	100%
75th percentile	----	----	----	100%	100%
Median	----	----	----	100%	100%
25th percentile	----	----	----	97.07%	98.24%
5th percentile	----	----	----	62.08%	82.22%
● Min	----	----	----	0.00%	0.00%

Clinical sites with evaluable data		Clinical sites meeting the target	
Number	%	Number	%
273	100%	249	91.21%

Comment

Autoren

Deutsche Krebsgesellschaft e.V.
Deutsche Gesellschaft für Senologie e.V.
Certification Commission Breast Cancer Centers
Rolf Kreienberg, Speaker Certification Commission
Simone Wesselmann, Deutsche Krebsgesellschaft e.V.
Christoph Kowalski, Deutsche Krebsgesellschaft e.V.
Diethelm Wallwiener, University Hospital Tübingen
Sara Yvonne Brucker, University Hospital Tübingen
Julia Ferencz, OnkoZert GmbH

Imprint

Publisher and responsibility regarding content:
Deutsche Krebsgesellschaft (DKG)
Kuno-Fischer-Straße 8
14057 Berlin, Germany
Tel: +49 (030) 322 93 29 0
Fax: +49 (030) 322 93 29 66
Vereinsregister Amtsgericht Charlottenburg,
Vereinsregister-Nr.: VR 27661 B

in cooperation with:
OnkoZert, Neu-Ulm
www.onkozert.de

Version e-A4-en; 21.07.2016

DOI: 10.13140/RG.2.1.3477.5768

ISBN: 978-3-946714-40-8



9 783946 714408